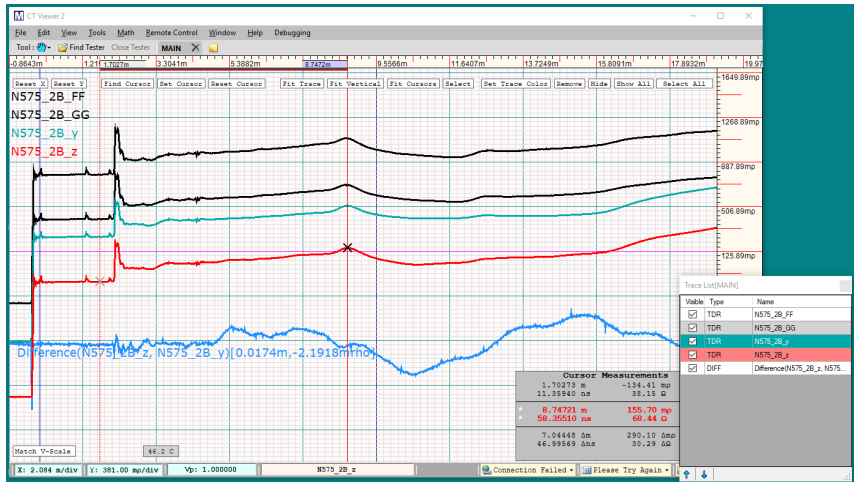


CT Viewer 2 Quick User Guide



Part No.: CT100B-M-CTVM-009

CAGE Code: 4JEE1

Revision Date: 2023.03.06

Copyright Notice

Copyright © 2008-2022 MOHR Test and Measurement LLC (MOHR). All rights reserved.

Reproduction of this manual in print and electronic form is authorized for U.S. Government purposes only. This manual may not be reproduced, distributed, transmitted, displayed, published, or broadcast in any form or medium by any other party without written permission from MOHR.

MOHR products are covered by U.S. and foreign patents, issued and pending. Information in this publication supersedes all previously published material. MOHR reserves the right to change product specifications or pricing at any time without notice.

This manual contains trademarks and material copyrighted or patented by MOHR and other third parties. All marks, copyrights, trade secrets, and patents should be considered to be the property of their respective owners and all rights are reserved. Nothing contained herein shall be construed by implication, estoppels, or otherwise as granting to the user a license under any copyright, trademark, patent, or other intellectual property right of MOHR or any third party. Statutory notice contained herein represents trademark status in the United States.

MOHR Test and Measurement LLC, 2105 Henderson Loop, Richland, WA 99354
USA

Manual Updates

We at MOHR are always working to improve the written materials we offer to our valued customers. Since our last printing, there may have been minor updates to this manual.

To view our most recent manual revision, open the accompanying CT Viewer 2 DVD, or visit us online at www.mohrtm.com. (Please click on Products, CT100, Downloads.)

Date Generated

2023.03.06

Software License Agreement

1. This is an agreement between MOHR Test and Measurement LLC (“MOHR”) and Licensee, who is being licensed to use the named Software.
2. Licensee acknowledges that this is only a limited nonexclusive license. MOHR is and remains the owner of all titles, rights, and interests in the Software.
3. This License permits Licensee to install the Software on more than one computer system, as long as the Software will not be used on more than one computer system simultaneously. Licensee will not make copies of the Software or allow copies of the Software to be made by others, unless authorized by this License Agreement. Licensee may make copies of the Software for backup purposes only.
4. **This Software is subject to a limited warranty.** MOHR warrants to Licensee that the physical medium on which this Software is distributed is free from defects in materials and workmanship under normal use, the Software will perform according to its printed documentation, and to the best of MOHR’s knowledge Licensee’s use of this Software according to the printed documentation is not an infringement of any third party’s intellectual property rights. This limited warranty lasts for a period of 90 days after delivery. To the extent permitted by law, THE ABOVE-STATED LIMITED WARRANTY REPLACES ALL OTHER WARRANTIES, EXPRESS OR IMPLIED, AND MOHR DISCLAIMS ALL IMPLIED WARRANTIES INCLUDING ANY IMPLIED WARRANTY OF TITLE, MERCHANTABILITY, NONINFRINGEMENT, OR OF FITNESS FOR A PARTICULAR PURPOSE. No agent of MOHR is authorized to make any other warranties or to modify this limited warranty. Any action for breach of this limited warranty must be commenced within one year of the expiration of the warranty. Because some jurisdictions do not allow any limit on the length of an implied warranty, the above limitation may not apply to this Licensee. If the law does not allow disclaimer of implied warranties, then any implied warranty is limited to 90 days after delivery of the Software to Licensee. Licensee has specific legal rights pursuant to this warranty and, depending on Licensee’s jurisdiction, may have additional rights.
5. In case of a breach of the Limited Warranty, Licensee’s exclusive remedy is as follows: Licensee will return all copies of the Software to MOHR, at Licensee’s cost, along with proof of purchase. (Licensee can obtain a step-by-step explanation of this procedure, including a return authorization code, by contacting Licensor at 2105 Henderson Loop, Richland, WA 99354 or 1-888-852-0408.) At MOHR’s option, MOHR will either send Licensee a replacement copy of the Software, at MOHR’s expense, or issue a full refund.
6. Notwithstanding the foregoing, MOHR IS NOT LIABLE TO LICENSEE FOR ANY DAMAGES, INCLUDING COMPENSATORY, SPECIAL, INCIDENTAL, EXEMPLARY, PUNITIVE, OR CONSEQUENTIAL DAMAGES, CONNECTED WITH OR RESULTING FROM THIS LICENSE AGREEMENT OR LICENSEE’S USE OF THIS SOFTWARE. Licensee’s jurisdiction may not allow such a limitation of damages, so this limitation may

- not apply.
7. Licensee agrees to defend and indemnify MOHR and hold MOHR harmless from all claims, losses, damages, complaints, or expenses connected with or resulting from Licensee's business operations.
 8. MOHR has the right to terminate this License Agreement and Licensee's right to use this Software upon any material breach by Licensee.
 9. Licensee agrees to return to MOHR or to destroy all copies of the Software upon termination of the License.
 10. This License Agreement is the entire and exclusive agreement between MOHR and Licensee regarding this Software. This License Agreement replaces and supersedes all prior negotiations, dealings, and agreements between MOHR and Licensee regarding this Software.
 11. This License Agreement is governed by the law of the State of Washington applicable to State of Washington contracts.
 12. This License Agreement is valid without MOHR's signature. It becomes effective upon the earlier of Licensee's signature or Licensee's use of the Software.

Contacting MOHR

Phone

+1-888-852-0408

Mail

MOHR Test and Measurement LLC
2105 Henderson Loop
Richland, WA 99354
USA

E-mail

Sales: sales@mohrnm.com

Technical Support: techsupport@mohrnm.com

Web

www.mohrnm.com

Contents

Copyright Notice	i
Manual Updates	iii
Software License Agreement	v
Contacting MOHR	vii
Contents	ix
List of Figures	xiii
List of Tables	xvii
1 Introduction	1
1.1 Compatibility With the MOHR CT100 TDR	1
2 Installation and Setup	3
2.1 Installing CT Viewer™ 2	3
2.2 Installing Optional Components	4
2.3 Installing USB Drivers	4
2.4 Updating CT Viewer	6
3 Connecting to the CT100B	9
3.1 Connecting the CT100B to CT Viewer 2 via USB	9
3.2 Connecting the CT100B to CT Viewer 2 via Ethernet	10
3.2.1 Using CT Viewer 2 to Connect to the CT100B	10
3.2.2 Using the CT100B to Connect to CT Viewer 2	12
3.3 Installing a CT100B License File	14
3.4 Updating the CT100B	14
3.5 Copying Traces From a CT100B to the Computer	15
3.6 Copying Traces From a CT100B to a Database	16
4 User Interface and On-Screen Menus	19
4.1 User Interface Overview	19
4.2 Tabs	20
4.3 On-Screen Buttons and Tools Menus	20
4.3.1 Reset X	21
4.3.2 Reset Y	21
4.3.3 Adjust X, Y Offsets	22
4.3.4 Vert Re-Center at Cursor Location	22
4.3.5 Find Cursor	23
4.3.6 Set Cursor	23
4.3.7 Reset Cursor	23
4.3.8 Fit Trace	23

4.3.9	Fit Vertical, Vertical Fit Only	24
4.3.10	Fit Cursors	24
4.3.11	Match V-Scale	24
4.3.12	Select	25
4.3.13	Select All	25
4.3.14	Set Trace Color	26
4.3.15	Hide, Show All	27
4.3.16	Remove	27
4.3.17	Pan	27
4.3.18	Selection Box	27
4.3.19	Zoom Box	27
4.3.20	Set Vp	28
4.4	Window Menu	28
4.4.1	Reset Windows Location	28
4.4.2	Tools Window	29
4.4.3	History List Window	29
4.4.4	Trace List Window	29
4.4.5	Information Box/Cursor Measurements Window	30
4.4.6	Trace Minimap Window	30
4.4.7	Hide All Windows	31
5	General Functions	33
5.1	Manipulating Traces on the Workspace	33
5.2	Changing the Viewpoint	33
5.3	Changing the Vertical Scale	35
5.4	Changing the Horizontal Scale	35
5.5	Printing a Screenshot	36
5.6	Exporting a Screenshot	36
5.7	Configuring Ethernet Settings	37
5.8	Loading Traces From Files	37
5.8.1	Set Default Trace Folder	37
5.8.2	Open Trace	37
5.8.3	Envelope Plots	38
5.8.4	Import .ZTP File to Trace Folder	40
5.8.5	Open Other Files	40
5.9	Saving Traces to a File	41
5.9.1	Save a Copy or Export	41
5.9.2	Save Trace to Database	41
5.10	Renaming Traces	41
5.10.1	Rename a Trace Stored in a .mohr File	41
5.10.2	Rename a Trace Stored in a Database	42
5.11	Changing How CT Viewer 2 Displays Traces (View Menu)	43
5.11.1	Changing the Horizontal Unit of Measurement	43
5.11.2	Changing the Vertical Unit of Measurement	44
5.11.3	Changing the Rendering Mode	45
5.11.4	Displaying Extra Grid Lines	46
5.11.5	Standard Deviation	46
5.11.6	VSWR	46
5.11.7	Temperature Display	46
5.11.8	Vertical Zoom at Cursor Location	47
5.11.9	Trace Label Options (Alignment and Visibility)	47

5.12	Annotations	48
5.12.1	Annotating Traces	48
5.12.2	Modifying and Deleting Annotations	49
5.13	Math	49
5.13.1	Average	51
5.13.2	Difference	52
5.13.3	FFT	53
5.13.4	Phase	53
5.13.5	Complex Division	54
5.13.6	S-Parameter	54
5.13.7	First Derivative (Slope)	55
5.13.8	Smooth	56
6	Remote Control	59
6.1	Setting up Remote Control	59
6.1.1	Connecting the CT100B	59
6.1.2	Assistant Mode	60
6.1.3	Disconnecting Remote Control	60
6.2	Overview	60
6.2.1	Adjusting Frame Rate	60
6.2.2	Live Trace Smooth Mode	61
6.2.3	Recording a Movie (Time Slice)	62
6.2.4	Navigating a Movie (Time Slice)	64
7	Keyboard and Mouse Help	67
8	Working With SQL	69
8.1	Configuring the Database	69
8.2	Loading Traces From a Database to the Workspace	70
8.3	Saving Traces in a Database	71
	Index	73

List of Figures

2.1	CT Viewer 2 installer package	3
2.2	CT Viewer 2 icon	4
2.3	Installing driver software for the CT100B	5
2.4	Windows security message for third party software	5
2.5	Successful installation of the USB driver	6
2.6	The update window for CT Viewer 2	6
3.1	Find Tester command	9
3.2	Open Tester command	9
3.3	Transfer dialog window showing traces stored on the CT100B	10
3.4	Find Tester dialog box	11
3.5	The CT100B's IP address	11
3.6	Message displayed by CT Viewer 2 when a CT100B connects	11
3.7	Main menu of the CT100B	12
3.8	CT Viewer connection menu on the CT100B	12
3.9	Select PC dialog box	13
3.10	Using CT Viewer 2 to find the IP address of the PC	13
3.11	Add PC dialog box	13
3.12	CT Viewer 2 has detected an available CT100B update	15
3.13	Transfer To dialog box for copying traces to a computer	15
3.14	A trace copied from the CT100B	16
3.15	Transfer To dialog box for copying traces to a database	17
4.1	Sample workspace with three traces	19
4.2	Multiple open workspace tabs	20
4.3	On-screen buttons	20
4.4	Tools menu, Tool drop-down menu, and Tools floating window	21
4.5	A trace moved to the right	21
4.6	A trace moved upward	22
4.7	Adjust X, Y Offsets dialog box	22
4.8	Set Cursor dialog box	23
4.9	Zoomed-in view region	23
4.10	Window after Fit Trace was executed	24
4.11	Match V-Scale command	25
4.12	Trace List sub-window	25
4.13	The Select All command selects every trace in the workspace	26
4.14	Press the Escape key to deselect every trace	26
4.15	Window for selecting trace color	27
4.16	Field for setting the Vp	28
4.17	Window menu	28
4.18	History List window	29
4.19	Trace List window	29
4.20	The Information Box window displays cursor measurements for the selected trace	30

4.21	Trace Minimap window	31
5.1	Workspace with three traces displayed	33
5.2	Use the D key to shift the view region to the right	34
5.3	Use the S key to shift the view region down	34
5.4	Use Shift-S to move only the selected trace down relative to the other traces	35
5.5	Increasing the horizontal scale (zooming out) using the E key	36
5.6	Save As dialog to save a screenshot	36
5.7	Ethernet options	37
5.8	Open Trace option under the File menu	38
5.9	Dialog box for copying envelope plot screenshots	39
5.10	An envelope plot has been successfully copied to CT Viewer 2	39
5.11	Viewing an envelope plot screenshot	40
5.12	The trace name box changes from pink to red when moused over	41
5.13	A dialog box appears once the user clicks on the Trace name box	41
5.14	The new name of the trace after being changed in the dialog	42
5.15	Open button at the bottom right of CT Viewer 2	42
5.16	Database with a trace selected for editing	42
5.17	Clicking on the name of the trace enables editing	43
5.18	Press enter to immediately save the name to the database	43
5.19	The Horizontal Units option is found under the View menu	44
5.20	Ruler measurements can be displayed in nanoseconds	44
5.21	Rendering Mode option	45
5.22	Line rendering mode	45
5.23	Point rendering mode	45
5.24	Workspace with and without extra grid lines	46
5.25	The Information Box can display the standard deviation and VSWR	46
5.26	Temperature display for a selected trace	47
5.27	The Trace Labels options can be found under the View menu	47
5.28	Annotation drop-down menu	48
5.29	Annotations and the annotation information box	49
5.30	Select Allow Changes in the annotation information box before modifying annotations	49
5.31	Math menu	50
5.32	Base figure for Math examples	51
5.33	An average trace	52
5.34	A difference trace	52
5.35	Options for FFT plugin	53
5.36	A Fast Fourier Transform (FFT) trace	53
5.37	The Complex Division of two FFT traces	54
5.38	S ₁₁ Trace Identification window	55
5.39	Slope of a cable highlighting some defects	56
5.40	Smoothing options	56
6.1	Remote Control menu	59
6.2	The CT100B/CT Viewer 2 connection has been established	59
6.3	Adjust Frame Rate option under the Remote Control menu	61
6.4	Changing the smooth mode with the Remote Control menu	62
6.5	Record To Movie File and Stop options under the Remote Control menu	63
6.6	CT Viewer 2 is recording data from the CT100B	63

6.7	Selecting a movie trace to load into the workspace	63
6.8	The movie trace has just been loaded	64
6.9	Movie sub-menu	65
7.1	Pressing the spacebar brings up keyboard and mouse shortcuts	67
8.1	Select a Connection button	69
8.2	Add a Server dialog box	69
8.3	Choose your SQL connection	70
8.4	Choose a database from the SQL server	70
8.5	File menu with database options	70
8.6	An example of a database overview	71
8.7	After saving traces to the database	72

List of Tables

- 3.1 Commands in the transfer dialog window 10
- 5.1 Math menu options 50
- 7.1 Keyboard help 67
- 7.2 Mouse help 68
- 8.1 Database functions 71

1 Introduction

The CT Viewer™ 2 computer software allows users of the MOHR CT100B Time-Domain Reflectometer (TDR) to transfer, view, and manipulate the cable scans that have been saved on their instruments. This software package allows the user to select stored scans and view, compare, and do a variety of mathematical transformations to any of the traces.

CT Viewer 2 also allows the user to create reports and print plots that can be imported into word-processing or report creation software, to create files of traces suitable for transfer to others, and to load trace files created by others.

1.1 Compatibility With the MOHR CT100 TDR

CT Viewer 2 is fully compatible with the older MOHR CT100, including connecting, transferring traces, and remote control. Some instructions in this manual refer to menus on the CT100B. Because the CT100B menu system differs from the CT100, these instructions may not apply to the CT100.

2 Installation and Setup

Installation requirements:

1. Windows Vista or newer
2. Microsoft .NET Framework 4.6 (included on the installation DVD)

2.1 Installing CT Viewer™ 2

Insert the CT Viewer 2 DVD into your DVD drive.

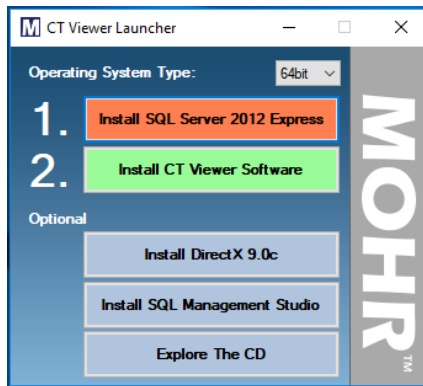


Figure 2.1 CT Viewer 2 installer package.

If auto-run is enabled, CT Viewer 2 will automatically launch the installer package (Figure 2.1). If auto-run is disabled, the CT Viewer 2 installer package can be executed manually by clicking on DVD-DRIVE\setup.exe (where DVD-DRIVE is the drive letter of the DVD drive).

Although the installer package suggests installing SQL Server 2012 Express before installing CT Viewer 2, the SQL Server software is optional. It only needs to be installed if you previously used CT Viewer 1 and would like to access databases you created while using that program. See Section 2.2 for more information on installing the SQL Server software.

On the launcher, use the drop-down menu next to *Operating System Type* to select either 64-bit or 32-bit, depending on what type of operating system the PC has.

Click on *Install CT Viewer Software* to begin installation.

The installer will try to install the USB drivers for the CT100B. Most computers will show a prompt to approve the driver installation. If the driver installation is cancelled, CT Viewer 2 will not be able to connect to the CT100B over USB.

The USB drivers can be installed any time after the installation. See Section 2.3.

After CT Viewer 2 is installed, you can install any optional components included on the DVD. See Section 2.2.

The installer will place a shortcut to CT Viewer 2 on the desktop. Double-click on the icon to get started. The icon should look similar to Figure 2.2.



Figure 2.2 CT Viewer 2 icon.

2.2 Installing Optional Components

By default, CT Viewer 2 will use any hardware video acceleration that is installed on the system. For convenience, Microsoft DirectX 9.0c has been included on the installation DVD. If you wish to install DirectX, click on *Install DirectX 9.0c* in the launcher window and follow the prompts.

If you wish to install SQL Server 2012 Express software for database access, click on *Install SQL Server 2012 Express*. Follow the prompts and choose the default values. If the SQL Server software successfully installs, you should be able to create databases to store traces in CT Viewer 2.

For administrators who want extra control over their SQL server install, SQL Management Studio has been included on the installation DVD. Click on *Install SQL Management Studio* to install this software.

2.3 Installing USB Drivers

USB drivers are typically installed automatically during CT Viewer 2 installation (Section 2.1). The drivers can also be installed at any time using the following procedure.

Connect the CT100B to the computer by means of a standard A-B USB cable. Plug the B (square) end of the cable into the back of the CT100B, and the A (rectangle) end of the cable into a USB port on the PC. **(The USB ports on the front of the CT100B are used for thumb drives, keyboards, etc., not for connecting to your PC.)**

Power on the CT100B and allow it to boot up completely.

Windows will detect that a new device is connected to the computer (Figure 2.3).

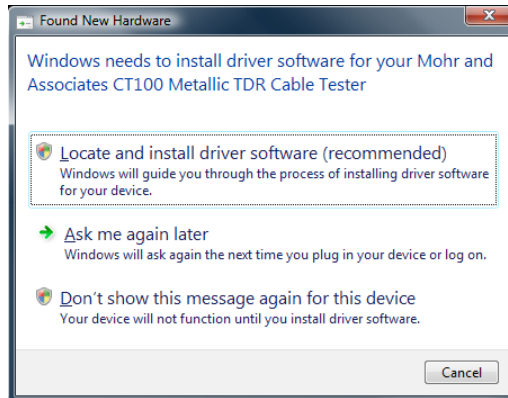


Figure 2.3 After connecting the instrument via USB, Windows will suggest installing driver software for the CT100B.

Note: A common problem with Windows is that it may be configured to not display the window shown in Figure 2.3. If this happens, run the *Device Manager* software in Windows. The CT100B will show up in the device manager window as a device with a question mark or exclamation point. The symbol means that the driver is not yet installed. Right-click on the CT100B and select *Update Driver* to continue with the driver installation.

Choose *Locate and Install Driver Software* to advance to the next step. At this time, insert the CT Viewer 2 DVD into the DVD drive.

After inserting the CT Viewer 2 DVD and clicking the *Next* button, Windows will search the DVD for the necessary files. After a successful search, Windows will prompt the operator to install the driver. See Figure 2.4. To proceed to the next step, click on *Install*.

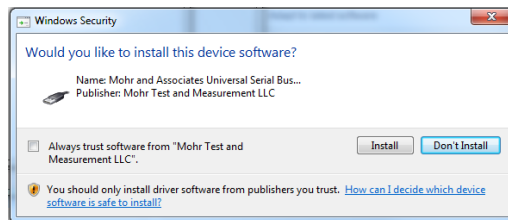


Figure 2.4 Windows security message for third party software.

To confirm the install, the final display should look similar to the one pictured in Figure 2.5.

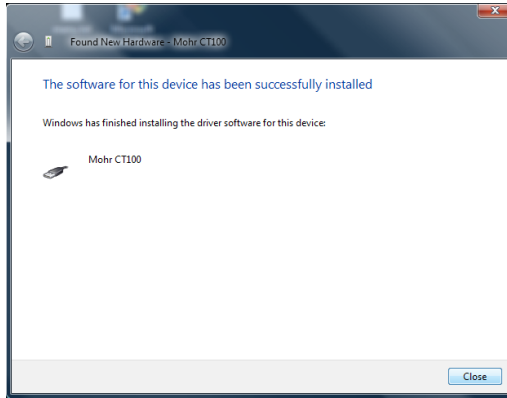


Figure 2.5 Windows has successfully installed the USB driver for the CT100B.

2.4 Updating CT Viewer

You should always be using the latest version of CT Viewer 2. If the computer running CT Viewer 2 is connected to the Internet, it may automatically check for updates when you start CT Viewer 2. You can also click on *Help* then *Check for Updates* to see if you are running the latest version.

If CT Viewer 2 finds that there is a newer version of the software available, it will launch an update window (Figure 2.6). This window lists the updates made to CT Viewer 2.

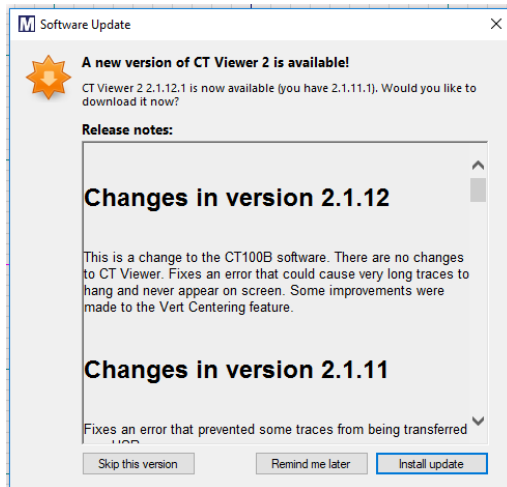


Figure 2.6 When CT Viewer 2 can be updated, it will launch an update window.

Click on *Install Update*. CT Viewer 2 will download the update. Then click *Install and Relaunch* and follow the prompts. You will now be using the latest version of CT Viewer 2.

If the computer running CT Viewer 2 cannot connect to the Internet, and you would like to install the most recent version of CT Viewer 2, contact MOHR for an installation DVD.

3 Connecting to the CT100B

3.1 Connecting the CT100B to CT Viewer 2 via USB

USB drivers are usually automatically installed with CT Viewer 2. But they can be installed at any time using the steps in Section 2.3. If USB drivers are installed, connecting the CT100B to CT Viewer 2 via USB is a quick process.

Double-click on the CT Viewer 2 icon on the computer desktop to get started. Connect the CT100B to the computer using a standard A-B USB cable. Plug the B (square-shaped) end of the cable into the back of the CT100B, and the A (rectangle-shaped) end into the PC. This can be done before or after you turn on the CT100B.

Before the USB cable is plugged in, CT Viewer 2 will have a button saying *Find Tester* (Figure 3.1). *Find Tester* should automatically change to *Open Tester* once the USB cable is plugged in and the CT100B is turned on (Figure 3.2).

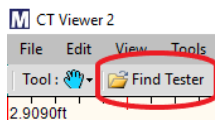


Figure 3.1 The Find Tester command appears as an on-screen button and in the File menu.

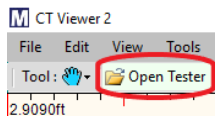


Figure 3.2 Once you've successfully connected to the CT100B, the Open Tester command appears as an on-screen button and in the File menu.

If it doesn't change, click on *Find Tester* and CT Viewer 2 will connect to the CT100B and bring up a transfer dialog window listing the collection of traces on the CT100B (Figure 3.3). In the transfer dialog window common commands are available via buttons (Table 3.1).

Trace Label	Time Stamp	Machine ID	On PC?
screen	2018/07/23 11:29:25	CT100X001	
SAVED TRACE	2018/11/14 13:39:36	CT100X001	
smooth	2018/11/13 14:08:14	CT100X001	
alligator clip	2018/11/13 11:57:50	CT100X001	
{+FARM2}	2018/11/09 12:24:21	CT100X001	Y
{S26}	2018/11/09 12:11:53	CT100X001	
abodef	2018/07/10 20:02:35	CT100X001	
derivative	2018/07/02 15:48:27	CT100X001	
MU2 Probe #002	2018/04/06 16:59:03	CT100X001	
Teflon2dc737clear	2018/03/30 12:52:02	CT100X001	
teflon	2018/03/20 16:43:12	CT100X001	

Figure 3.3 Transfer dialog window showing traces stored on the CT100B. The trace named “screen” is selected.

Table 3.1 Commands in the transfer dialog window

Button	Command
Transfer To	Copy the selected traces to the computer. See Section 3.5 for more details.
Select All	Select the entire collection of traces available on the CT100B.
Delete	Delete the selected traces from the CT100B. This removes them permanently. This option can take some time.

3.2 Connecting the CT100B to CT Viewer 2 via Ethernet

An alternative approach is to connect the CT100B to the computer by means of an Ethernet cable. This allows long distance control and transfer of files.

Plug an Ethernet cable into the back panel of the CT100B and connect the cable to the network. Allow the CT100B to boot up completely. Double-click on the CT Viewer 2 icon on the desktop of your PC.

You can use either CT Viewer 2 or the CT100B to connect to each other via Ethernet. There are different steps for each connection.

3.2.1 Using CT Viewer 2 to Connect to the CT100B

In CT Viewer 2 click on the *Find Tester* button. This will bring up a dialog box listing a potential CT100B connection and a spot where you can manually enter an IP for the CT100B (Figure 3.4). To find the CT100B’s IP address, press the blue *MENU* button, then *Settings*, then *Network Settings*, then *Show IP Config* (Figure 3.5). In CT Viewer 2, either choose *OK* under the potential connection or type in the IP address and click *Use Manual Entry*.

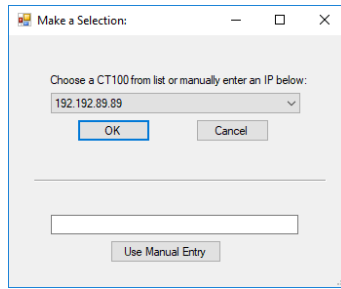


Figure 3.4 The Find Tester dialog box.

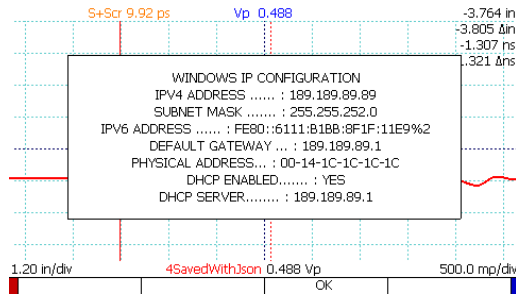


Figure 3.5 The CT100B's IP address.

If you have successfully connected to the CT100B, the *Find Tester* button should have changed to *Open Tester* and CT Viewer 2 will display a message that a CT100B has connected to it with the IP address of the CT100B (Figure 3.6).

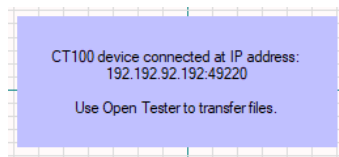


Figure 3.6 The message displayed by CT Viewer 2 when a CT100B connects.

You can now open the tester in CT Viewer 2 using the *Open Tester* button or *File* → *Open Tester*. See Table 3.1 for an explanation of the commands available when you use *Open Tester*. You can also start a Remote Control session. See Section 6 for more information about Remote Control.

3.2.2 Using the CT100B to Connect to CT Viewer 2

Press the blue *MENU* button on the CT100B to open the *Main* menu. See Figure 3.7.

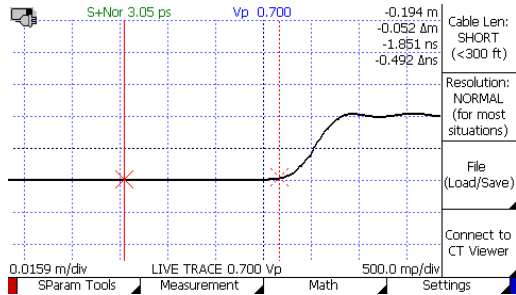


Figure 3.7 The Main menu of the CT100B.

Select *Connect to CT Viewer* on the CT100B. A menu with connection options appears along the bottom of the CT100B's screen (Figure 3.8).

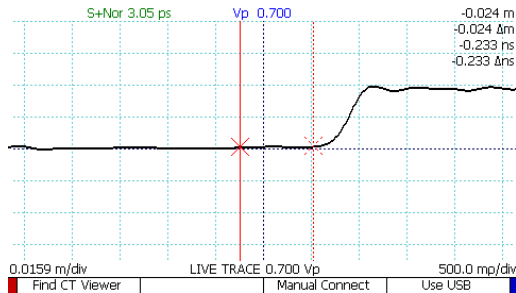


Figure 3.8 The CT Viewer connection menu on the CT100B.

Select *Find CT Viewer* on the CT100B, and the CT100B will scan for servers and will either automatically connect to a server if there is only one available or bring up a list of detected servers to choose from.

Use the *M-FUNCTION* knob to choose a PC, and press the *Select* button. If the PC you wish to connect to is not in the list, choose *Cancel* to go back to the previous screen so that you can manually connect to CT Viewer 2.

If you select *Manual Connect*, the *Select PC* dialog box will appear (Figure 3.9).

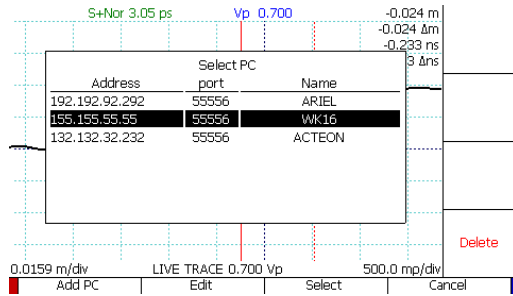


Figure 3.9 The Select PC dialog box containing three different PCs in the list.

Use the *M-FUNCTION* knob to choose a PC and press the *Select* button. If the PC you wish to connect to is not in the list, choose *Add PC* to add it.

To find the address of the PC running CT Viewer 2, go to *File* → *Ethernet Configuration* in CT Viewer 2 (Figure 3.10). A window will appear that will list the address or addresses of that PC. Enter that information into the *Add PC* dialog box on the CT100B (Figure 3.11).

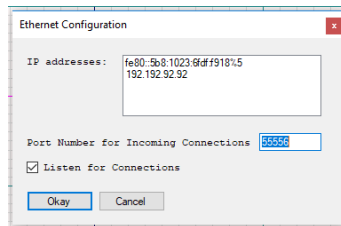


Figure 3.10 Using CT Viewer 2 to find the IP address of the PC.



Figure 3.11 After selecting *Add PC*, enter the information for the PC into this dialog box.

CT Viewer 2 will display a message that a CT100B has connected to it. You can now open the tester (*File* → *Open Tester*) or start a Remote Control session.

3.3 Installing a CT100B License File

Depending on how it was purchased, the CT100B may be supplied with either a 30-day demonstration license or permanent license. Current license information can be found on the CT100B by navigating to *Settings* → *Info* → *License* → *License Info*.

If the CT100B came with a permanent license already installed, no new license installation is necessary. If your CT100B has a license with a pending expiration and you are unsure how to upgrade to a permanent license, contact MOHR. MOHR will email you a permanent license file. Save the license file to your computer before attempting to install it on the CT100B.

Connect the CT100B to the computer by means of a USB or Ethernet cable. Power on the CT100B and allow it to boot up completely.

Connect the CT100B to CT Viewer 2. For assistance, see Section 3.1 and Section 3.2.

Once a successful connection has been made, click on *Help*, then *Install License*.

Browse to the location of the saved license file and select it. The CT100B will display a message if the license file was installed successfully.

3.4 Updating the CT100B

Connect the CT100B to the computer by means of a USB or Ethernet cable. Power on the CT100B and allow it to boot up completely.

In CT Viewer 2, click on *File* then *Open Tester* (Hotkey: Ctrl-F).

The transfer dialog window will appear and list the collection of traces on the CT100B.

If there is an update available, CT Viewer 2 will prompt the operator to update the CT100B (Figure 3.12). Generally, you should always be running the latest versions of CT100B and CT Viewer software. See Section 2.4 for information about updating CT Viewer 2 software.

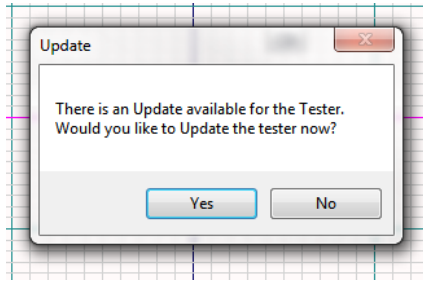


Figure 3.12 CT Viewer 2 has detected that there is an update available for the CT100B.

The update process of the CT100B is tracked via a progress bar. CT Viewer 2 will prompt the operator when the update is complete. The operator should reboot the CT100B and reconnect it with CT Viewer 2 after the reboot.

3.5 Copying Traces From a CT100B to the Computer

1. Connect the CT100B to the computer by means of a USB or Ethernet cable. Power on the CT100B and allow it to boot up completely.
Note: If the CT100B is connected by an Ethernet cable, refer to Section 3.2 for instructions on how to connect CT Viewer 2 to the CT100B over Ethernet.
2. In CT Viewer 2, go to the *File* menu and choose *Select Default Trace Folder*. Select or create a folder to store your trace files.
3. In CT Viewer 2, click *Open Tester* (Hotkey: Ctrl-F). A transfer dialog window will appear and list the collection of traces available on the CT100B.
4. Select the desired traces. To select multiple traces, either hold down Ctrl while selecting each trace or hold down Shift to select neighboring traces.
5. Click on the *Transfer To* button. A dialog box should appear (Figure 3.13).

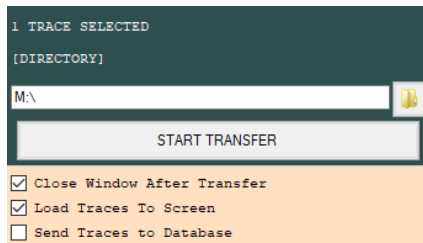


Figure 3.13 The Transfer To dialog box for copying traces to a computer.

6. Verify that the checkbox next to *Send Traces to Database* is not checked.
7. Verify that the destination folder is correct and then click *Start Transfer*.

Once the selected traces are copied from the CT100B, they will load onto the CT Viewer 2 screen. CT Viewer 2 scales loaded traces to fit vertically, covering at least five divisions (Figure 3.14).

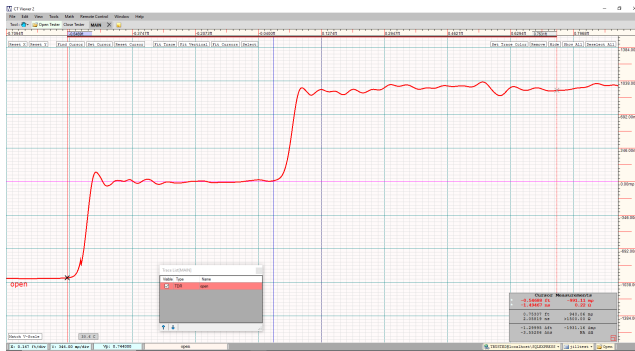


Figure 3.14 A trace copied from the CT100B.

3.6 Copying Traces From a CT100B to a Database

Using a database to store your traces is optional. It is only recommended for users who previously used CT Viewer 1, stored traces in a database, and who would like to still be able to access those traces. Only simple saved traces can be transferred to a database. If other trace types, such as derivative or difference traces, need to be transferred from the CT100B to CT Viewer 2, see Section 3.5. See Section 8 for information on configuring a database.

1. Connect the CT100B to the computer by means of a USB or Ethernet cable. Power on the CT100B and allow it to boot completely.
Note: If the CT100B is connected by an Ethernet cable, refer to Section 3.2 for instructions on how to connect CT Viewer 2 to the CT100B over Ethernet.
2. Click on *Open Tester* (Ctrl-F).
3. A transfer dialog window will list the collection of traces available on the CT100B.
4. Select the desired trace on the list. To select multiple traces, either hold down Ctrl while selecting each trace or hold down Shift to select neighboring traces.
5. Click on the *Transfer To* button.
6. Make sure the box next to *Send Traces to Database* is checked (Figure 3.15).

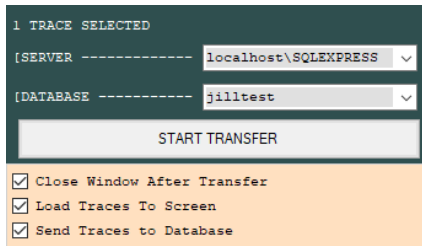


Figure 3.15 The Transfer To dialog box for copying traces to a database.

7. Verify the SQL server and database are correct; otherwise, change the SQL server and database using the drop-down menus.
8. Once a SQL server and database have been selected, an operator can start the transfer process by clicking on the *Start Transfer* button.

4 User Interface and On-Screen Menus

4.1 User Interface Overview

In Figure 4.1, we can see a sample workspace with three traces loaded.



Figure 4.1 A sample workspace with three traces. The numbers on the figure correspond with the numbers below.

1. The ruler at the top is drawn using the units defined by the user. Figure 4.1 displays the horizontal units in meters.
2. On-screen menu buttons are available for quick access to common commands.
3. Names of current loaded traces are displayed. The currently selected trace is drawn in red and the label is also red and in a slightly larger font than the other traces.
4. The current scaling information for the selected trace is shown at the bottom left of the display.
5. The velocity of the pulse and the name of the currently selected trace are displayed at the bottom center of the window.
6. The *Information Box/Cursor Measurements* window at the bottom right shows the X-value (distance) in meters (or current horizontal units) and nanoseconds, and Y-value in millirho and ohms at each cursor.

4.2 Tabs

CT Viewer 2 has workspace tabs (Figure 4.2). These allow for the user to have multiple independent workspaces each with their own individually loaded traces and history.

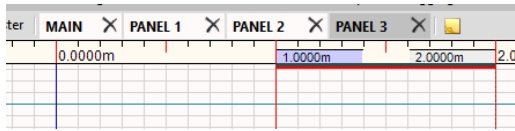


Figure 4.2 Multiple open workspace tabs.

1. To create a new workspace tab, click on the yellow *New Panel* icon found to the right of the workspace tabs. This will add a new tab to CT Viewer 2 where a user can load additional traces.
2. To close a workspace tab, click the X icon on the workspace tab. **Note:** It is not possible to recover a tab once it has been closed.

4.3 On-Screen Buttons and Tools Menus

The following functions assume that the operator has loaded a few traces onto the CT Viewer 2 workspace. Use Figure 4.1 as a base figure image for the following sections. Functions of on-screen buttons (Figure 4.3) can also be accessed through the *Tools* menu.

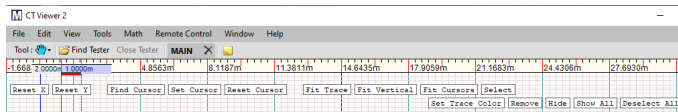


Figure 4.3 On-screen buttons.

There is a *Tool* drop-down menu that can be used to access some of these commands, as well as a “floating” window that contains a list of commands. See Figure 4.4.

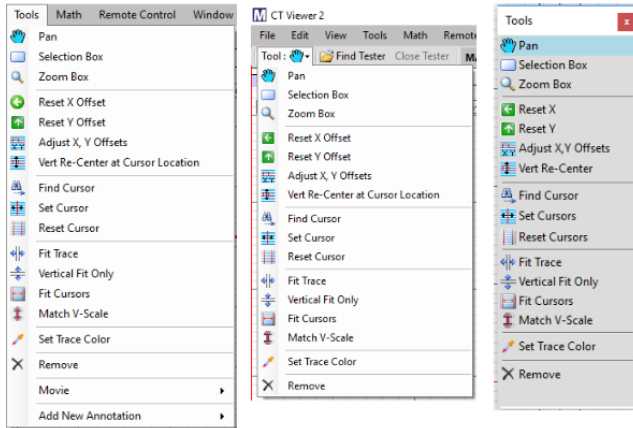


Figure 4.4 From left, the Tools menu, the Tool drop-down menu, and the Tools floating window.

4.3.1 Reset X

Selecting *Reset X* (*Reset X Offset* in the *Tools* menu) will restore the X-offset for the selected trace to zero. Figure 4.5 shows the selected trace has been shifted to the right 0.55 meters. The offset is displayed next to the trace label. The *Reset X* button will put it back to the 0 offset position as shown in Figure 4.1.

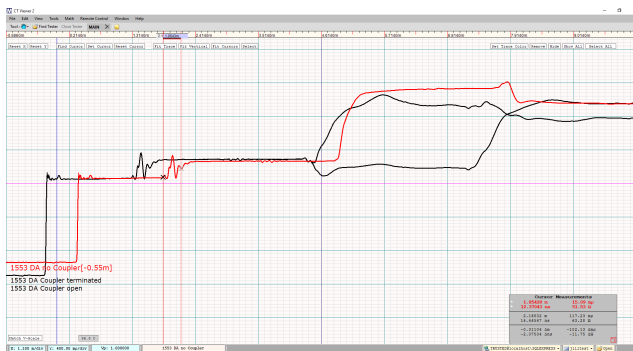


Figure 4.5 The selected cable has been moved 0.55 meters right from its original position.

4.3.2 Reset Y

Selecting *Reset Y* (*Reset Y Offset* in the *Tools* menu) will reset any relative changes done on the Y-axis (millirho) of the selected trace to zero. Figure 4.6 shows that the

selected trace has been moved up on the display. *Reset Y* will restore it to its original position as shown in Figure 4.1.



Figure 4.6 The selected trace has been moved upward from its original Y-offset.

4.3.3 Adjust X, Y Offsets

The *Adjust X, Y Offsets* menu selection allows the user to set specific X and/or Y offsets or ohms at cursor for the selected trace (Figure 4.7). Changing the Y offset affects ohms at cursor and vice versa.

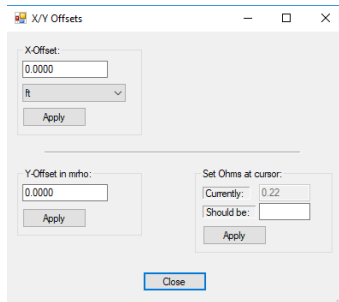


Figure 4.7 The Adjust X, Y Offsets dialog box.

4.3.4 Vert Re-Center at Cursor Location

The *Vert Re-Center at Cursor Location* menu selection moves the trace vertically so that the cursor/trace intersection is centered.

4.3.5 Find Cursor

Clicking the *Find Cursor* button will swap the active and inactive cursors. If the newly active cursor is off-screen, the view will be re-centered on that location. Use *Find Cursor* repeatedly to jump back and forth between two locations.

4.3.6 Set Cursor

Clicking *Set Cursor* gives you a dialog box to enter specific X-ruler coordinates for the two cursors (Figure 4.8).

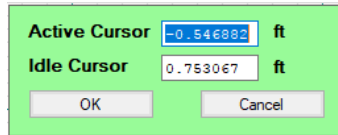


Figure 4.8 The Set Cursor dialog box.

4.3.7 Reset Cursor

Clicking *Reset Cursor* will move cursors into the view region if they are off-screen.

4.3.8 Fit Trace

The *Fit Trace* button automatically changes the offset and X- and Y-scales so that the selected trace will fit in the entire workspace. It is most useful to restore an overview of a trace after zooming in to look at details. For example, Figure 4.9 shows a zoomed-in view. Clicking on *Fit Trace* will restore the horizontal and vertical scales so that the entire trace fits in the window again. Figure 4.10 shows the same traces after the *Fit Trace* command was used.

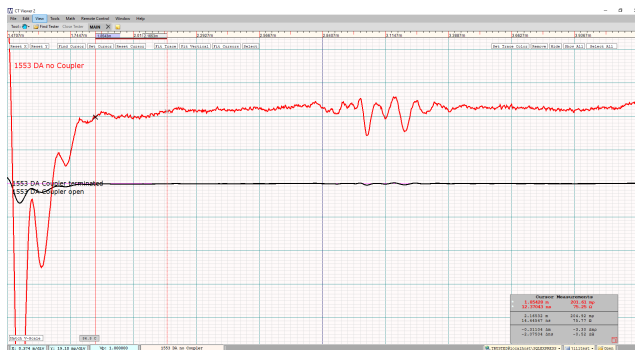


Figure 4.9 The view region is zoomed in so only part of the selected trace is visible.



Figure 4.10 Window after Fit Trace was executed.

4.3.9 Fit Vertical, Vertical Fit Only

The on-screen button for this function is *Fit Vertical*. It is also found under the *Tools* window as *Vertical Fit Only*. Choose *Fit Vertical* to re-scale selected traces so that they fit vertically on the screen.

4.3.10 Fit Cursors

Selecting *Fit Cursors* zooms in the window horizontally to display only the region between the cursors.

4.3.11 Match V-Scale

The *Match V-Scale* menu selection changes all selected traces' vertical scale to match the scale of the primary selected trace and lines them up. See Figure 4.11 for an example.

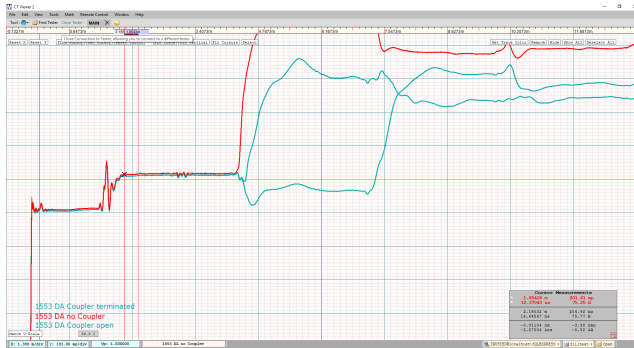


Figure 4.11 The Match V-Scale command changes each selected trace's vertical scale to match the primary selected trace (red).

4.3.12 Select

(Hotkey: Tab)

The *Select* button selects the next trace in the list. Repeatedly choosing *Select* will cycle through all of the visible traces.

Alternatively, click on a trace name in the *Trace List* sub-window, shown in Figure 4.12. Open the *Trace List* sub-window by selecting *Window* → *Traces* from the menu bar.

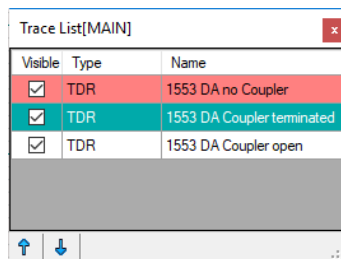


Figure 4.12 Trace List sub-window.

4.3.13 Select All

(Hotkey: Ctrl-A)

The *Select All* button selects all traces visible on the display. The primary selected trace will be highlighted in red while secondary selected traces will be highlighted in teal (Figure 4.13).



Figure 4.13 The Select All command selects every trace in the workspace.

If all traces are selected, the *Deselect All* button or menu item can be clicked to deselect all the traces. Or you can press the Escape key to deselect all traces (Figure 4.14).

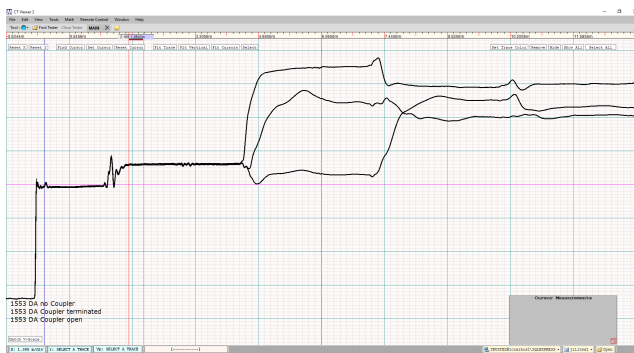


Figure 4.14 Press the Escape key to deselect every trace.

4.3.14 Set Trace Color

Select any trace or traces, then choose *Set Trace Color*. A window for picking colors will appear (Figure 4.15). Use this window to change the color of the selected traces.

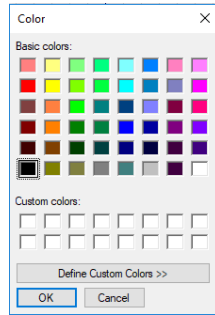


Figure 4.15 The window for selecting trace color.

4.3.15 Hide, Show All

The *Hide* button hides the selected traces from the display but keeps them in the workspace. Use *Show All* to redraw them on the screen. The *Visible* checkbox in the *Trace List* sub-window shows the visibility status of each trace (see Figure 4.12). Click on the check box to hide or show a trace.

4.3.16 Remove

(Hotkey: Delete)

Clicking the *Remove* button removes the selected traces from the workspace. This will not delete them from permanent storage (either disk files or database).

4.3.17 Pan

Found on all the *Tool* menus. When *Pan* is selected, clicking the background and dragging with the mouse will move traces, cursors, etc. This is the default tool for the mouse.

4.3.18 Selection Box

Found on all the *Tool* menus. Choose *Selection Box*, then drag over a region of the screen. Traces inside the region will be selected.

4.3.19 Zoom Box

Found on all the *Tool* menus. Choose *Zoom Box*, then drag over a region of the screen. CT Viewer 2 will zoom in on that region.

4.3.20 Set Vp

The field for setting the Vp can be displayed by clicking on the *Vp* button (Figure 4.16).

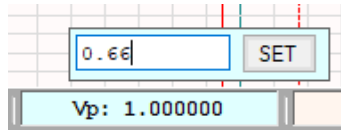


Figure 4.16 The field for setting the Vp.

Type a new Vp setting and click the *Set* button to set the Vp for the selected trace. The horizontal scale and cursors will be redrawn using the new value.

4.4 Window Menu

CT Viewer 2 has several on-screen windows that can be turned on and off under the *Window* menu (Figure 4.17). Some of them, like the *Tools* window, can act as shortcuts to functions that are also found in the drop-down menus. Others provide additional functionality to CT Viewer 2. These windows are explained in the following sections.

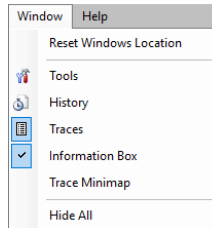


Figure 4.17 The Window menu.

The *Tools*, *History*, *Traces*, and *Trace Minimap* windows can easily be moved anywhere within the CT Viewer 2 workspace or even outside the main CT Viewer 2 window by clicking and dragging them with the mouse.

The *Information Box* window is typically located in the bottom right of the screen, though it can be moved by clicking the red square at the bottom right of the box and then clicking and dragging with the mouse. Clicking the red square again will move the box back to the bottom right.

4.4.1 Reset Windows Location

Clicking the *Reset Windows Location* button in the *Window* menu will reset visible on-screen windows to their default locations.

4.4.2 Tools Window

The functionality of the *Tools* window can be found in Section 4.3.

4.4.3 History List Window

The *History List* displays a list of all the actions performed in the current workspace (Figure 4.18). By clicking the undo and redo buttons at the bottom of the *History List*, the user can reverse or repeat actions. The user can also use Ctrl-Z and Ctrl-Y to reverse or repeat actions.

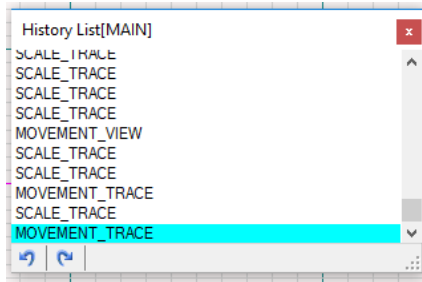


Figure 4.18 History List window.

Left-clicking on any action in the *History List* will undo all actions up to that point.

4.4.4 Trace List Window

The *Trace List* displays a list of all traces that are currently loaded into the active workspace, indicating if the trace is visible on-screen, the type of trace, and the trace's name. In addition, X and Y offsets for traces will be displayed if that option is selected in the *Trace Label* section of the *View* menu. The primary selected trace will be highlighted in red and any secondary selected traces will be highlighted in teal (Figure 4.19).

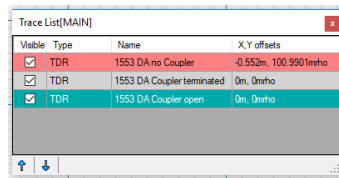


Figure 4.19 Trace List window.

The user can select traces within the *Trace List* by left-clicking on any individual trace or by clicking the up or down arrows at the bottom of the *Trace List*.

Holding down the Shift key and left-clicking on an unselected trace will select all the traces between the unselected trace and the primary selected trace.

Holding down the Ctrl key and left-clicking on a trace will select and unselect traces in addition to the primary trace.

By checking and unchecking the box in the visible column, the user can show or hide the associated trace in the workspace.

4.4.5 Information Box/Cursor Measurements Window

The *Information Box* window at the bottom right of the screen displays cursor measurements for the selected trace in the chosen horizontal and vertical units (Figure 4.20). Measurements for the active cursor are displayed in red with stars next to them. Other measurements in the box are for the inactive cursor as well as the relative distance, relative time, relative reflection coefficient, and relative impedance. The *Information Box* can also display standard deviation and voltage standing wave ratio (VSWR). See Section 5.11.5 and Section 5.11.6.

Cursor Measurements	
* -0.27078 ft	-0.50 mp
* -0.78657 ns	49.95 Ω
0.23245 ft	941.72 mp
0.67523 ns	>1500.00 Ω
-0.50322 Δft	-942.22 Δmp
-1.46179 Δns	NA ΔΩ

Figure 4.20 The Information Box window displays cursor measurements for the selected trace.

4.4.6 Trace Minimap Window

The *Trace Minimap* shows a mini version of the entire selected trace. The part of the trace that is visible on-screen is highlighted in a teal box on the minimap (Figure 4.21).

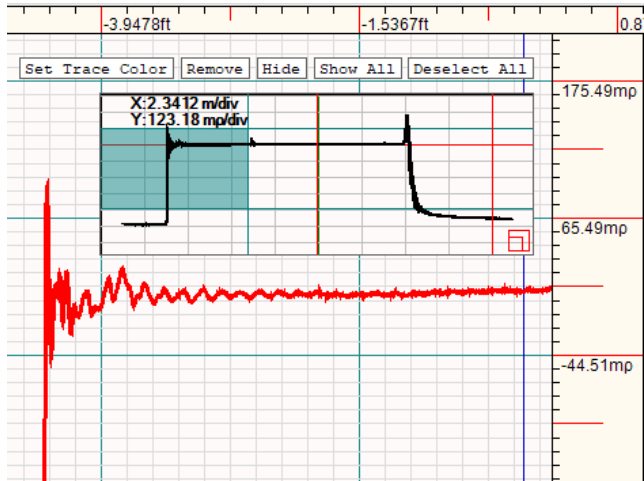


Figure 4.21 The Trace Minimap window shows a mini version of the entire selected trace and highlights the part of the trace visible on-screen.

4.4.7 Hide All Windows

By clicking the *Hide All* menu item in *Window*, the user can hide all of the on-screen windows except the *Information Box/Cursor Measurement* window. The *Information Box* can only be hidden by unchecking it in the *Window* menu.

5 General Functions

5.1 Manipulating Traces on the Workspace

You can zoom in and out on traces, and move them left, right, up, and down to see details easier. This section describes the keystrokes necessary to do these things. See Figure 5.1 for an example of three loaded traces. For each of the following sections, use Figure 5.1 as a base image. Each of the following figures depicts the screen after some operation.

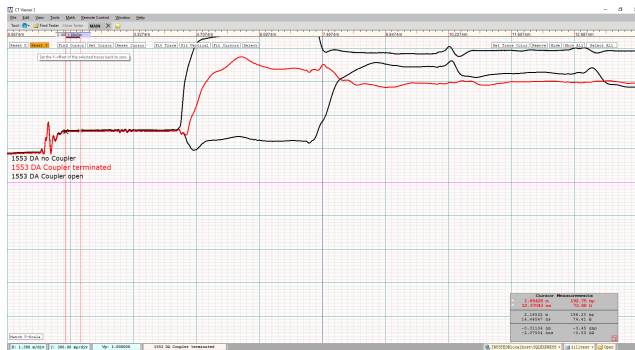


Figure 5.1 A workspace with three traces displayed.

5.2 Changing the Viewpoint

To move all on-screen traces, use the W-A-S-D keys to move them up, left, down, and right respectively (Figure 5.2 and Figure 5.3).

Select traces by left-clicking on them. To select more than one trace, hold down the Shift key and click additional traces on the workspace.

To move only the selected trace(s), use the same W-A-S-D keys while holding down Shift (Figure 5.4).

Alternatively, left-click and drag the mouse to move all on-screen traces in any direction. Hold down Shift and left-click and drag the mouse to move the selected trace up and down independently of other on-screen traces. Hold down Ctrl and left-click and drag the mouse to move the selected trace left and right independently of other on-screen traces. Or hold down Ctrl and Shift and left-click and drag the mouse to move the selected trace in any direction independently of other on-screen traces.

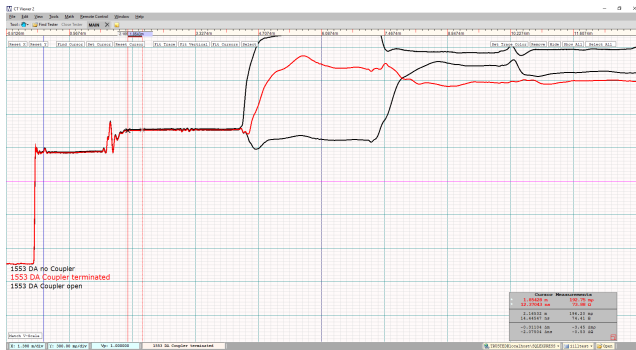


Figure 5.2 Use the D key to shift the view region to the right, revealing area on the left that was previously hidden.



Figure 5.3 Use the S key to shift the view region down, revealing area on the top that was previously hidden.



Figure 5.4 Use Shift-S to move only the selected trace down relative to the other traces.

5.3 Changing the Vertical Scale

Select a trace by left-clicking on it. To select more than one trace, hold down the Shift key and click additional traces on the workspace.

To decrease the vertical scale (zoom in), either scroll the mouse wheel up or press the – key. To increase the vertical scale (zoom out), either scroll the mouse wheel down or press the + key.

5.4 Changing the Horizontal Scale

Any changes made to the horizontal scale affect all on-screen traces.

To decrease the horizontal scale (zoom in), press the Q key.

To increase the horizontal scale (zoom out), press the E key. See Figure 5.5 for an example. As before, use Figure 5.1 as a base image for comparison.

The current X and Y scaling information is displayed at the bottom left of the workspace.

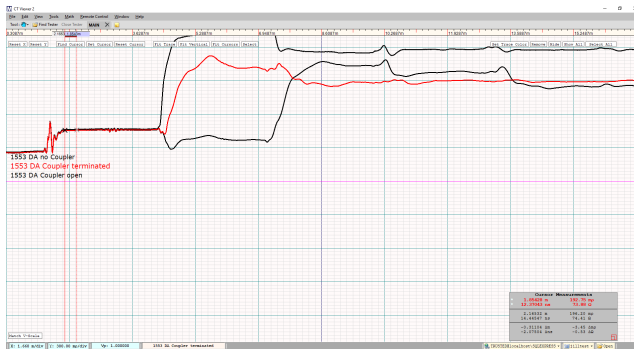


Figure 5.5 Increasing the horizontal scale (zooming out) using the E key.

5.5 Printing a Screenshot

With CT Viewer 2 you can print a screenshot of the current workspace. To do this, click on *File* and then *Print* (Hotkey: Ctrl-P). A print dialog will appear where you can select the printer to use and adjust basic settings for printing.

Additionally, to print multiple loaded traces on separate pages, click on *File* and then *Print Individual Trace*. A print dialog will appear that is used for all of the selected traces.

5.6 Exporting a Screenshot

Click on *File* then *Export Screenshot* (Hotkey: Ctrl-Alt-X). CT Viewer 2 will take a screenshot of the workspace. A *Save As* dialog will appear for you to enter a name and choose a location and file type to save the resulting image file (Figure 5.6).

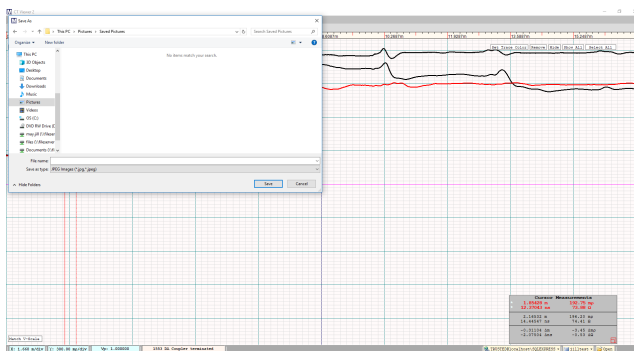


Figure 5.6 Save As dialog to save a screenshot.

5.7 Configuring Ethernet Settings

Click on *File* then *Ethernet Configuration* (Hotkey: Ctrl-E). This will display an Ethernet configuration dialog box (Figure 5.7).

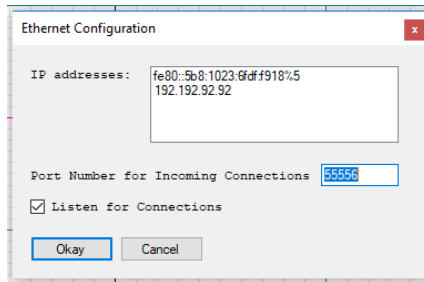


Figure 5.7 Ethernet options.

1. The IP addresses shown in Figure 5.7 are only an example. IP addresses listed in the dialog box are for the machine running CT Viewer 2. You will need to enter one of the listed IP addresses into the CT100B configuration to connect a CT100B to CT Viewer 2 using Ethernet. For more information on connecting using Ethernet, see Section 3.2.
2. The port number displayed in the dialog box is the one that CT Viewer 2 will listen to for incoming connections.

Usually you do not need to change these settings. If you do, enter the port number to use, select whether to listen on the port, and press *OK* to accept the new settings.

5.8 Loading Traces From Files

5.8.1 Set Default Trace Folder

Set Default Trace Folder in the *File* menu opens a window for selecting the default folder for loading and saving traces. Each time the *Open Trace* command is used, it will begin in the default folder.

Imported traces will be saved to the default folder.

5.8.2 Open Trace

Open Trace is used to load traces that have been transferred from a CT100B and stored as “.mohr” files on your PC.

1. Click on *File* then *Open Trace* (Hotkey: Ctrl-O). See Figure 5.8. *Open Trace* will always start in the folder selected using *Set Default Trace Folder*.
2. Select the file to load.
3. Click on *Open*. The trace contained in the file will be loaded onto the workspace.

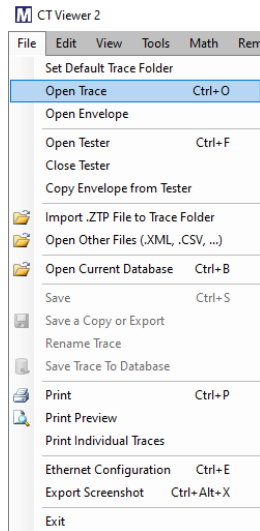


Figure 5.8 The Open Trace (Hotkey: Ctrl-O) option can be found under the File menu.

5.8.3 Envelope Plots

Envelope plots that have been saved as screenshots on the CT100B can be transferred to and viewed on CT Viewer 2.

5.8.3.1 Copy Envelope Plots

Connect the CT100B to CT Viewer 2 via USB or Ethernet. For more information on connecting CT Viewer 2 to the CT100B, see Section 3.1 and Section 3.2.

1. Click on *File* then *Copy Envelope from Tester*. A dialog box will appear. See Figure 5.9.

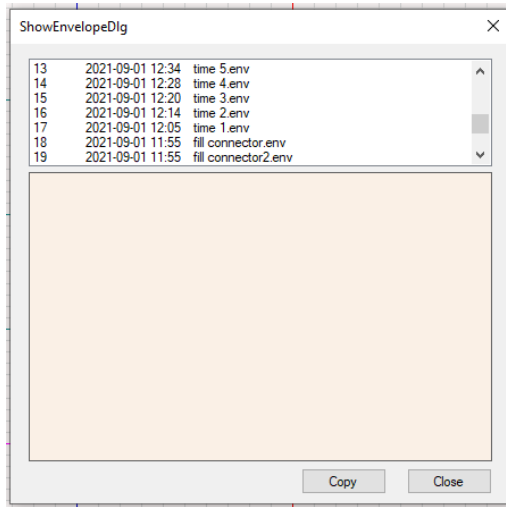


Figure 5.9 Dialog box for copying envelope plot screenshots.

2. Select the envelope plot to copy.
3. Click *Copy*. When the envelope plot has been copied to the default trace folder for CT Viewer 2, it will be displayed in the bottom part of the dialog box. See Figure 5.10.
4. When finished with copying envelope plots, click *Close*.

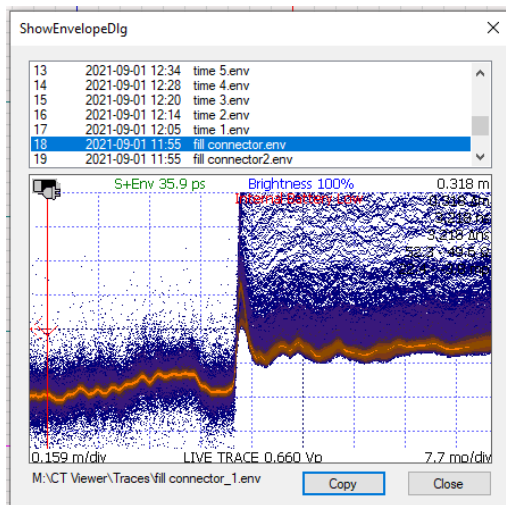


Figure 5.10 An envelope has been successfully copied to CT Viewer 2.

5.8.3.2 Open Envelope Plots

Envelope plot screenshots can be viewed in CT Viewer 2 once they have been copied to the default trace folder.

1. Go to *File* then *Open Envelope*.
2. A list of envelope plot screenshots appears. Select the envelope plot to view and click *Open*. The envelope plot will appear on-screen. See Figure 5.11.

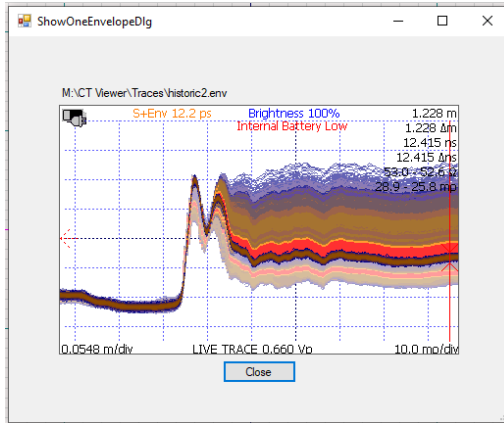


Figure 5.11 Viewing an envelope plot screenshot.

When finished with viewing the envelope plot screenshot, select *Close*.

5.8.4 Import .ZTP File to Trace Folder

Import .ZTP File to Folder is used to import the traces stored in a ZTP file to the default folder as set by *Set Default Trace Folder*.

ZTP files are an older format that can store multiple traces in a single file. When ZTP files are imported into CT Viewer 2, they are converted to .mohr files.

5.8.5 Open Other Files

Use *Open Other Files* to open other file formats, e.g., files from older CT100s or from EFPs (another instrument manufactured by MOHR). Supported file formats include CSV, XML, CTV, and CTM.

5.9 Saving Traces to a File

5.9.1 Save a Copy or Export

1. Import the desired traces onto the workspace.
2. Select a trace.
3. Click on *File* then *Save a Copy or Export* and enter a name.
4. Select a file format to save to. Supported file formats: mohr, CSV, XML.
5. Click on *Save*.

5.9.2 Save Trace to Database

See Section 8 for information on configuring a database.

1. Import the desired traces onto the workspace.
2. Select a trace.
3. Click on *File* then *Save Trace To Database*.

5.10 Renaming Traces

CT Viewer 2 offers two methods for renaming traces. The first covers changing the name of traces stored within “.mohr” files, and the second method addresses traces stored on a SQL database. Changing the trace name also changes the actual filename of the trace.

For the purpose of Section 5.10.2, it is assumed that a database connection has already been set up for CT Viewer 2.

5.10.1 Rename a Trace Stored in a .mohr File

1. Open a “.mohr” trace file.
2. Click on the name of the trace in the information bar (Figure 5.12) at the bottom of CT Viewer 2. A dialog will appear upon clicking on the trace name (Figure 5.13).



Figure 5.12 The trace name box will change color from pink to red when moused over.



Figure 5.13 The dialog box will appear once the user clicks on the Trace name box.

- Enter the new name for the trace into the dialog and click the *SET* button. You will be given a chance to confirm or reject the name change and overwrite the saved trace. If you click *Yes*, the new trace name will be displayed (Figure 5.14) and the filename for the trace will be changed to the new name.

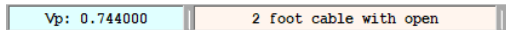


Figure 5.14 The new name of the trace after being changed in the dialog.

5.10.2 Rename a Trace Stored in a Database

- Open the database containing the desired trace by clicking the *Open* button in the bottom right of CT Viewer 2 (Figure 5.15) or by selecting *File* → *Open Current Database* from the menu bar. See *Working With SQL* for instructions on setting up a connection to an SQL database.

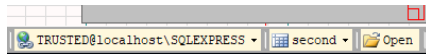


Figure 5.15 The Open button at the bottom right of CT Viewer 2.

- Select the trace that you wish to change the name of (Figure 5.16).

Time Stamp	Machine ID	Trace Label	Velocity
04/19/2019 13:38:08	CT100004174	50hntest	0.66
04/19/2019 13:36:55	CT100004174	shorttest	0.66
04/01/2019 10:01:02	CT100004174	9999-cursor	0.75
03/29/2019 12:21:10	CT100004174	bbbb	0.75
03/25/2019 15:57:14	CT100004174	9999HHHh	0.685
11/30/2018 11:29:25	CT100NX001	screenstest	0.7
12/29/2017 13:52:49	CT100002053	1553-baseline	1
11/12/2017 14:40:29	CT100NX001	open2	0.744
11/12/2017 14:33:38	CT100NX001	test	0.744
05/04/2017 15:25:38	CT100NX001	loadcal	0.702365
05/04/2017 15:24:04	CT100NX001	shortcal	0.702365
05/04/2017 15:22:41	CT100NX001	opencal	0.702365

Figure 5.16 Database with a trace selected for editing.

- Click on the name of the trace you want to edit under the *Trace Label* column (Figure 5.17).

Time Stamp	Machine ID	Trace Label	Velocity
04/19/2019 13:38:08	CT100004174	50ohntest	0.66
04/19/2019 13:36:55	CT100004174	shotortest	0.66
04/01/2019 10:01:02	CT100004174	pppp-cursor	0.75
03/28/2019 12:21:10	CT100004174	3test	0.75
03/25/2019 15:57:14	CT100004174	pppp9Hhh	0.685
11/30/2018 11:29:25	CT1000W001	screenintest	0.7
12/29/2017 13:52:49	CT100002053	1553baseline	1
11/12/2017 14:40:29	CT1000W001	open2	0.744
11/12/2017 14:33:38	CT1000W001	test	0.744
05/04/2017 15:25:30	CT1000W001	loadcal	0.702365
05/04/2017 15:24:04	CT1000W001	shotcal	0.702365
05/04/2017 15:22:41	CT1000W001	opencal	0.702365

Figure 5.17 Clicking on the name of the trace will enable editing.

4. Enter a new name for the trace and press the Enter key (Figure 5.18).

Time Stamp	Machine ID	Trace Label	Velocity
04/19/2019 13:38:08	CT100004174	50ohntest	0.66
04/19/2019 13:36:55	CT100004174	shotortest	0.66
04/01/2019 10:01:02	CT100004174	pppp-cursor	0.75
03/28/2019 12:21:10	CT100004174	3test	0.75
03/25/2019 15:57:14	CT100004174	pppp9Hhh	0.685
11/30/2018 11:29:25	CT1000W001	screenintest	0.7
12/29/2017 13:52:49	CT100002053	1553baseline	1
11/12/2017 14:40:29	CT1000W001	open2	0.744
11/12/2017 14:33:38	CT1000W001	test	0.744
05/04/2017 15:25:30	CT1000W001	loadcal	0.702365
05/04/2017 15:24:04	CT1000W001	shotcal	0.702365
05/04/2017 15:22:41	CT1000W001	opencal	0.702365

Figure 5.18 Press enter to immediately save the name to the database.

5. The name of the trace has now been updated within the database.

If the trace is already loaded on-screen, it will need to be reloaded before the name change will take effect on-screen.

5.11 Changing How CT Viewer 2 Displays Traces (View Menu)

The *View* menu (Hotkey: Alt-V) contains a host of options to manipulate the way CT Viewer 2 displays traces.

5.11.1 Changing the Horizontal Unit of Measurement

To change the horizontal unit of measurement that CT Viewer 2 uses, click on *View* then *Horizontal Units*. Select the desired unit. See Figure 5.19.

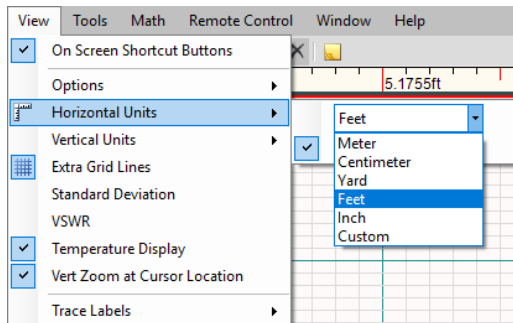


Figure 5.19 The Horizontal Units option is found under the View menu.

After selecting a new unit type, CT Viewer 2 will recalculate its ruler, and all measurement will be done in that unit.

5.11.1.1 Nanoseconds Ruler

CT Viewer 2 can display ruler measurements in nanoseconds. Go to *View*, then *Horizontal Units*, then *Show NS in Ruler*. The ruler will then show nanoseconds as its primary measurement, though the cursors will be labeled on the ruler with the chosen horizontal unit. See Figure 5.20.

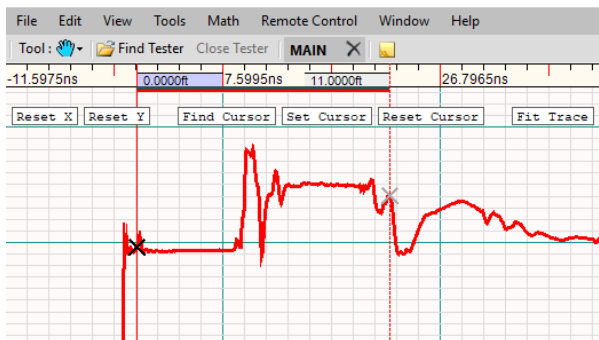


Figure 5.20 The horizontal ruler with measurements in nanoseconds. The cursors are labeled on the ruler with the chosen horizontal unit, which in this case is feet.

5.11.2 Changing the Vertical Unit of Measurement

To change the vertical unit of measurement that CT Viewer 2 uses, click on *View* then *Vertical Units*. Select the desired unit.

After selecting a new unit type, CT Viewer 2 will recalculate its ruler, and all measurement will be done in that unit.

5.11.3 Changing the Rendering Mode

The *Rendering Mode* option can be found under the *View* → *Options* menu (Figure 5.21).

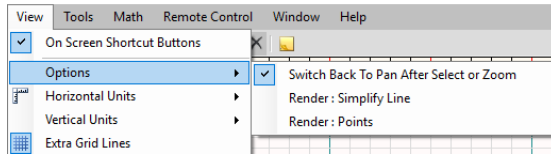


Figure 5.21 The Rendering Mode option.

After a new rendering mode is selected, CT Viewer 2 will use that mode to draw the on-screen traces.

To change the rendering mode that CT Viewer 2 uses, click on *View* then *Options*. Select the rendering mode you desire. You can choose between rendering with points or lines. See Figure 5.22 and Figure 5.23 for examples of each rendering mode.

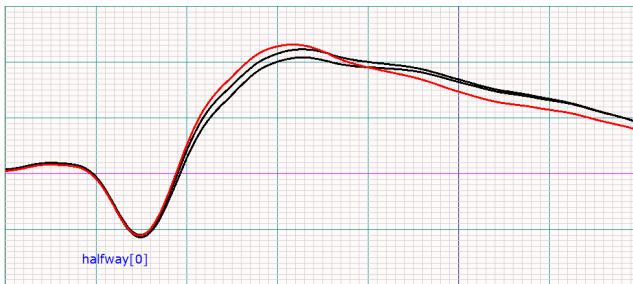


Figure 5.22 Line rendering mode.

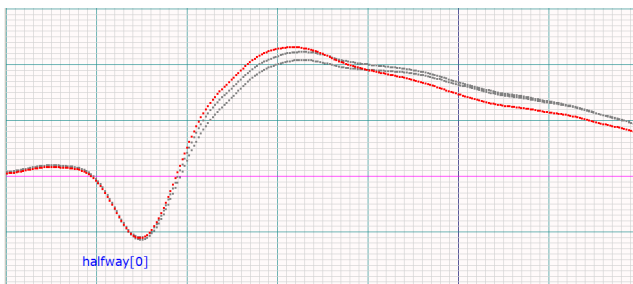


Figure 5.23 Point rendering mode.

5.11.4 Displaying Extra Grid Lines

To instruct CT Viewer 2 to draw extra grid lines, click on *View* then *Extra Grid Lines*. See Figure 5.24.

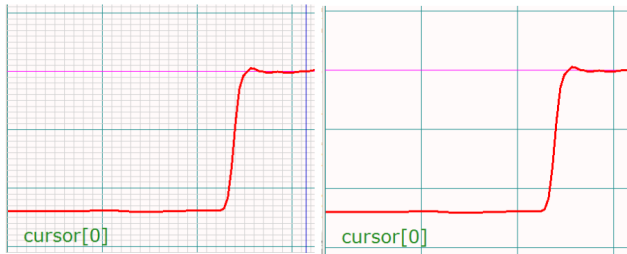


Figure 5.24 Workspace with and without extra grid lines.

5.11.5 Standard Deviation

To display the standard deviation of the selected trace in the *Information Box/Cursor Measurements* window at the bottom right, click on *View* then *Standard Deviation* (Figure 5.25).

5.11.6 VSWR

To display the voltage standing wave ratio (VSWR) in the *Information Box/Cursor Measurements* window at the bottom right, click on *View* then *VSWR* (Figure 5.25).

Cursor Measurements			
*	1.00000 ft	11.23 mp	
*	2.03341 ns	51.14 Ω	
*	1.02	VSWR	
<hr/>			
	2.00000 ft	13.45 mp	
	4.06681 ns	51.36 Ω	
	1.03	VSWR	
<hr/>			
	-1.00000 Δft	-2.22 Δmp	
	-2.03341 Δns	-0.23 ΔΩ	
	0.96208 σ (std dev	in mRho)	<input type="checkbox"/>

Figure 5.25 The Information Box displaying the standard deviation and VSWR for the selected trace.

5.11.7 Temperature Display

To display the temperature for the selected trace on-screen, click on *View* then *Temperature Display*. The temperature will be displayed in a small box near the bottom of the screen (Figure 5.26).

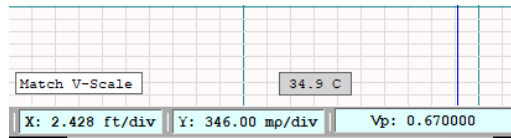


Figure 5.26 The temperature display for a selected trace.

5.11.8 Vertical Zoom at Cursor Location

To keep the Y value at the cursor fixed when increasing or decreasing the vertical scale (zooming in and out), click on *View* then *Vert Zoom at Cursor*.

5.11.9 Trace Label Options (Alignment and Visibility)

To change the trace label options that CT Viewer 2 uses, click on *View* then *Trace Labels* (Figure 5.27).

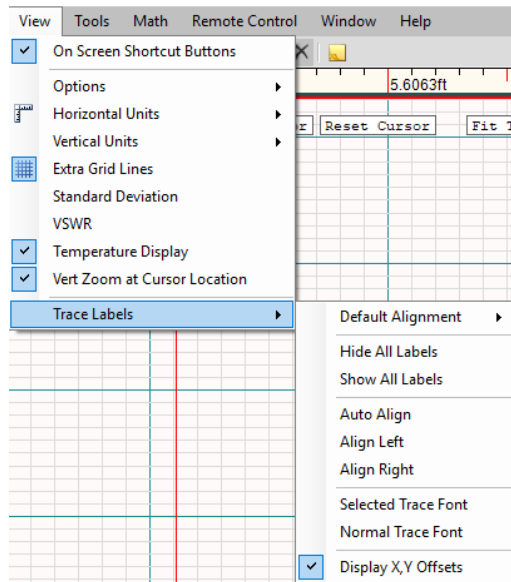


Figure 5.27 The Trace Labels options can be found under the View menu.

With these options, a user can choose how to display the trace name associated with each trace on the workspace. The default display is set to auto align with traces, but the user can choose a new default or choose to have the trace names on the current screen displayed at the top right or top left. Trace names can also be hidden or

shown again using this menu, and the display font and font size for the trace labels can also be changed.

5.12 Annotations

Individual points or a range of points on a trace can be annotated on the CT100B or in CT Viewer 2. Annotations that have been saved on a trace on the CT100B can be viewed, modified, or deleted in CT Viewer 2. New annotations can also be created in CT Viewer 2.

5.12.1 Annotating Traces

To annotate an individual point on a trace, move the active cursor to that point. If a range of points on a trace needs to be annotated, move the active and inactive cursors to the starting and ending points of the range. To create an annotation:

1. Go to *Tools* then *Add New Annotation*.
2. Select either *Point Annotation* or *Range Annotation* from the drop-down menu. See Figure 5.28.

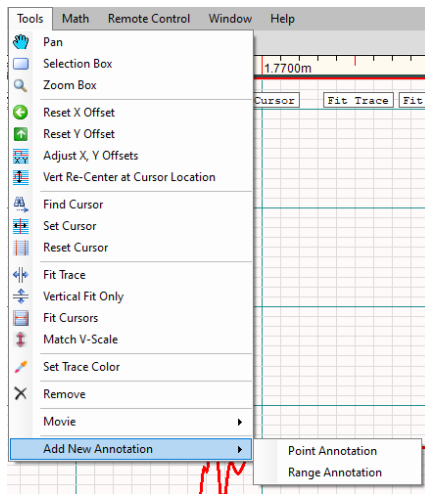


Figure 5.28 The annotation drop-down menu.

A point annotation will be indicated by a single triangle on the trace. A range annotation will have a triangle at each end of the range with a line connecting the two triangles. Click on a triangle to view annotation information. See Figure 5.29. The initial annotation indicates the points in nanoseconds, but this information can be changed. See Section 5.12.2.



Figure 5.29 Annotations and the annotation information box.

Go to *File* then *Save* to save the trace with annotations.

5.12.2 Modifying and Deleting Annotations

You can modify or delete annotations created on the CT100B or in CT Viewer 2. Click on an annotation triangle to bring up the annotation information box. Prior to making any changes, make sure the *Allow Changes* box has been selected. See Figure 5.30.

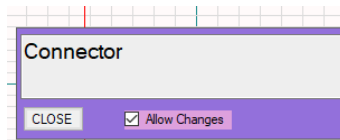


Figure 5.30 Select Allow Changes in the annotation information box before modifying an annotation.

Replace the current annotation text with the new annotation. Click *Set* to change the annotation. To delete an annotation, select the annotation triangle and then *Delete* in the annotation information box. Go to *File* then *Save* to save the trace after modifying or deleting annotations.

5.13 Math

The *Math* menu contains a list of special functions that perform calculations on traces. CT Viewer 2 ships with a number of standard functions. The standard set of plugins is shown in Figure 5.31 and described in Table 5.1.

There is a programmer's API available for users to create additional plugins. Contact MOHR for more information.

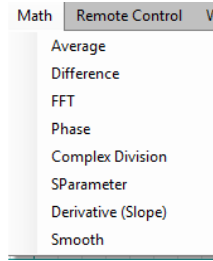


Figure 5.31 The Math menu.

Table 5.1 Math menu options

Menu Selection	Purpose/Action
Average	Create a new trace that is the average of all selected traces.
Difference	Create a new trace that is the difference of two selected traces.
FFT	Create a new trace that is the Fast Fourier Transform of the selected trace.
Phase	Create a new trace that shows the phase angle of the selected trace.
Complex Division	Create a new trace that is the complex division between two selected traces.
S-Parameter	Create a new trace that is the calibrated return loss plot (S_{11}) of a selected trace.
Derivative (Slope)	Create a new trace that is the slope (1st derivative) of the selected trace.
Smooth	Create a new trace that has a smoothing filter applied to the selected trace.

The traces displayed by CT Viewer 2 can be divided into two broad categories: time-domain traces and frequency-domain traces.

Time-domain traces include saved TDR traces. The horizontal axis represents time and distance with units of nanoseconds and feet or meters.

Frequency-domain traces include FFT traces, S-Parameter (S_{11}) traces, and phase traces. In CT Viewer 2, these are always transformations from one or more time-domain traces. The horizontal axis represents frequency with units of hertz or megahertz.

The two classes of traces have separate pairs of cursors. When a frequency-domain trace is selected, CT Viewer 2 will switch from the two time-domain cursors to two frequency-domain cursors.

Most *Math* menu options, such as smooth, will produce a new trace that is in the same domain as the parent traces. For example, the smooth transformation of an FFT trace is in the frequency domain. Some *Math* menu options only work with certain domains. Average, difference, and derivative traces only give accurate results for time-domain traces. Phase and complex division can only be used on frequency-domain traces. If you want to find the difference between two FFT traces, use complex division instead of difference.

The following math functions assume that the operator has loaded a few traces on to the CT Viewer 2 workspace.

Use Figure 5.32 as the base figure for comparison in the following sections.

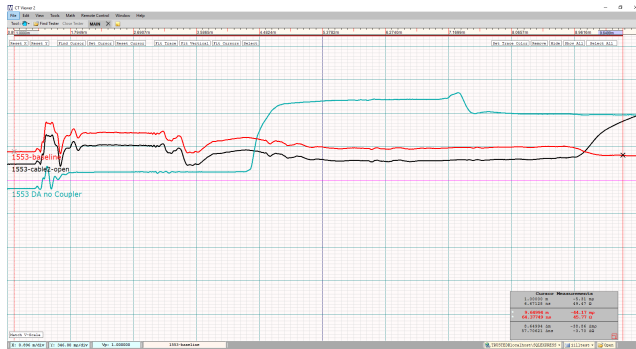


Figure 5.32 The primary selected trace (red), secondary selected trace (teal), and unselected trace (black).

5.13.1 Average

1. Select the traces of interest.
2. Click on *Math*, then *Average*.
3. A new trace will be created that is the average of the selected traces (Figure 5.33).

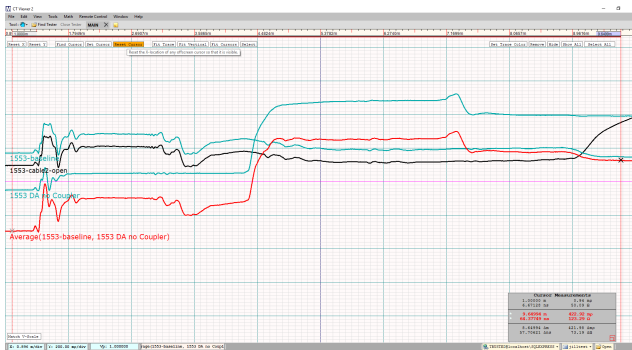


Figure 5.33 Taking the average of the two teal traces. The new average trace is shown in red.

5.13.2 Difference

1. Select two traces of interest.
2. Click on *Math*, then *Difference*.
3. A new trace will be created that is the difference of the selected traces (Figure 5.34).

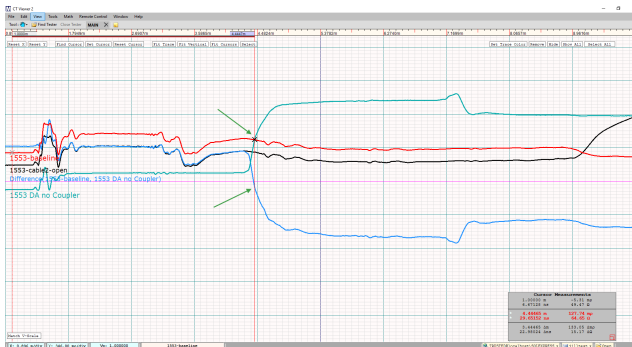


Figure 5.34 Taking the difference of the primary (red) and secondary (teal) selected traces. The difference is shown in blue.

Note: The vertical scale of the new trace is not necessarily the same as the originals. The green arrows highlight that where the two selected traces intersect, the difference is zero.

5.13.3 FFT

Select the trace of interest. Click on *Math*, then *FFT*. Enter your choice for window size and choose from the standard windowing functions in the *Options* dialog (Figure 5.35). Hann is a reasonable default windowing function for almost all situations.

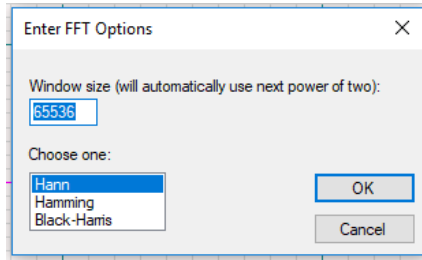


Figure 5.35 Options for FFT plugin.

A new trace will be created that is the Fast Fourier Transform of the selected trace (Figure 5.36).

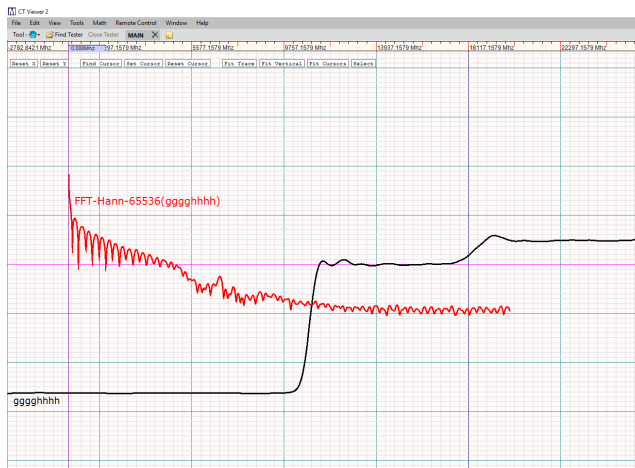


Figure 5.36 Getting the FFT of a cable trace. The FFT is shown in red.

5.13.4 Phase

This module will generate a phase trace based on a frequency-domain trace. Phase traces can be created for FFT, Complex Division, and S-Parameter traces. The result is the phase-angle of the complex value of the trace at each frequency.

1. Select a frequency-domain trace.
2. Click on the *Math* menu item, and select *Phase*.

5.13.5 Complex Division

This module will generate the negative complex division between two FFT traces. Use the following steps to do this.

1. Select two frequency-domain traces with the same resolution.
2. Click on the *Math* menu item, and select *Complex Division*.
3. A new trace will be generated that is the negative complex division between the primary trace and the secondary trace (Figure 5.37).



Figure 5.37 Getting the Complex Division of two FFT traces. The Complex Division is shown in red.

5.13.6 S-Parameter

The S-Parameter tool will generate a new S_{11} return loss plot for a specified measured trace. To use this tool, please use the following steps.

1. Select four time-domain traces. Three of the traces will be used as calibration traces taken with a short, open, and $50\ \Omega$ terminator. The fourth trace will be the measured trace to generate an S_{11} return loss plot.
2. Click on the *Math* menu item and select *SParameter*.
3. In the pop-up window, identify the short, open, load, and measured trace (Figure 5.38).

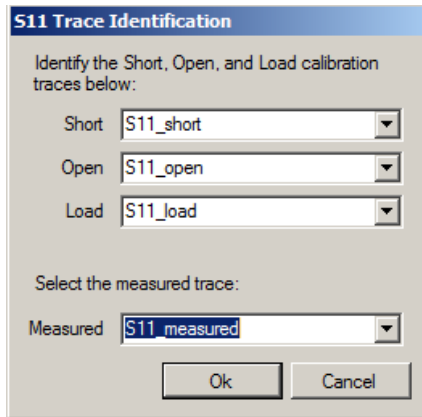


Figure 5.38 S_{11} Trace Identification window with traces selected for short, open, load, and measured.

4. Click *OK*. A new trace will be created that is the S_{11} return loss plot of the measured trace.

5.13.7 First Derivative (Slope)

Create a new trace that is the calculated slope at each point of the selected trace. The trace will often amplify subtle features of the original trace.

For example, in Figure 5.39, we can easily see the defects in a 1000' cable. Inspection of the physical cable revealed that these perturbations were actually connections in the cable where the manufacturer had connected shorter pieces to make up the 1000' length.

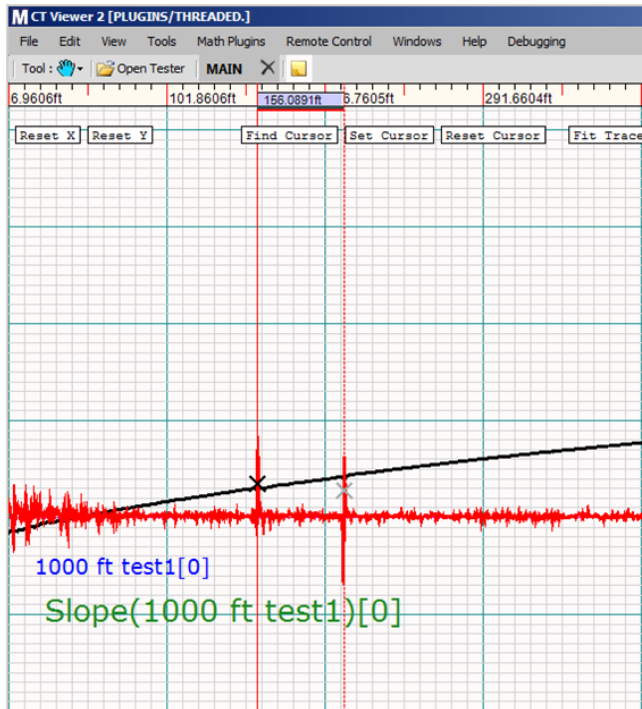


Figure 5.39 Slope of a cable highlighting some defects.

The cursors are on two spikes located at about 156 ft. and 208 ft.

5.13.8 Smooth

Create a new trace that has a smoothing filter applied to the selected trace. The trace is smoothed by averaging neighboring points. Choosing *Smooth* will bring up a smoothing options dialog box (Figure 5.40).

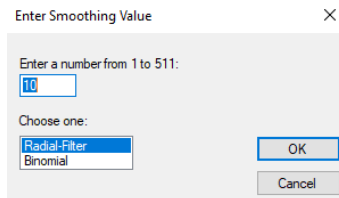


Figure 5.40 Smoothing options.

There are two things you can adjust in this dialog box:

1. The number of points (the window size) to use in each averaging operation.
2. The algorithm to use. Choose from Radial Filter or Binomial. Both of these are weighted filters where the center points in the averaging window count more than the ones at the edge. Radial Filter is the preferred algorithm.

6 Remote Control

6.1 Setting up Remote Control

6.1.1 Connecting the CT100B

Connect the CT100B to CT Viewer 2 via Ethernet. For more information on connecting using Ethernet, see Section 3.2. Remote Control does not work over a USB connection. Once a successful connection has been made, click on *Remote Control* then *Enable Remote Control* (Figure 6.1).

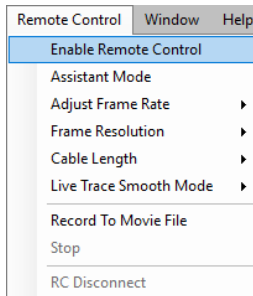


Figure 6.1 Remote Control menu.

CT Viewer 2 will negotiate a live stream with the CT100B. Once a successful handshake has been made, a live trace will appear on the workspace (Figure 6.2).



Figure 6.2 The CT100B/CT Viewer 2 connection has been established.

The live trace matches the trace the CT100B is measuring. An operator can use CT Viewer 2 to manipulate this live trace like any other trace. Any action done to the live trace will also be done in the CT100B. The live trace will update itself on-screen at a maximum rate of 24 frames per second.

6.1.2 Assistant Mode

After a valid CT100B/CT Viewer 2 connection has been made and a live trace is on the workspace, the CT100B is in a screensaver mode. *Assistant Mode* allows the trace to be displayed on the CT100B screen simultaneously with the trace in CT Viewer 2. Controls on the CT100B (such as Vp adjustments and horizontal and vertical scale and position changes) as well as the controls in the CT Viewer 2 program can be used to manipulate the trace. Any action done on the live trace in CT Viewer 2 is reciprocated over to the CT100B. This way the operator on each end will be viewing the same region of the trace. This mode can be useful for providing remote support to a CT100B user.

Turning on *Assistant Mode* will slow the maximum frame rate that the CT100B can transfer to the CT Viewer 2 software. To turn *Assistant Mode* off, simply uncheck it on the *Remote Control* menu.

6.1.3 Disconnecting Remote Control

To disconnect Remote Control, click on *Remote Control* then *RC Disconnect*. Remote Control will disengage, leaving the live trace on the CT100B updated to reflect any actions done to it in CT Viewer 2.

Note: After disconnecting Remote Control, CT Viewer 2 and the CT100B are still connected.

6.2 Overview

6.2.1 Adjusting Frame Rate

To change the frame rate in which data from the CT100B is sent, click on *Remote Control* then *Adjust Frame Rate* (Figure 6.3).

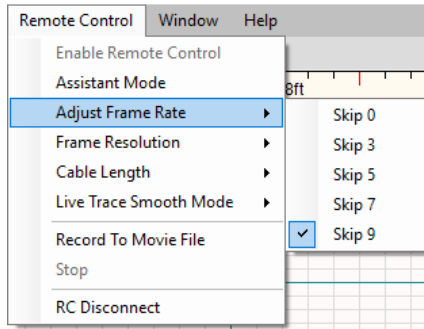


Figure 6.3 The Adjust Frame Rate option under the Remote Control menu.

Generally, an operator would want a faster frame rate when recording a time slice. Normally the frame rate should be slower, skipping a larger number of frames between transmissions.

6.2.2 Live Trace Smooth Mode

CT Viewer 2 can smooth (average) the incoming frame data to a specified sample range, much like how smoothing can be set from 1x to 1024x on the CT100B. For example, choosing a smoothing mode of 64x will instruct CT Viewer 2 to average the past 63 frames with the current frame.

By default, the smooth mode is set to 1x. To change the smooth mode, click on *Remote Control* then *Live Trace Smooth Mode* and select the desired sample size (Figure 6.4). **Note:** Changing the *Live Trace Smooth Mode* sample size is not reflected on the CT100B.

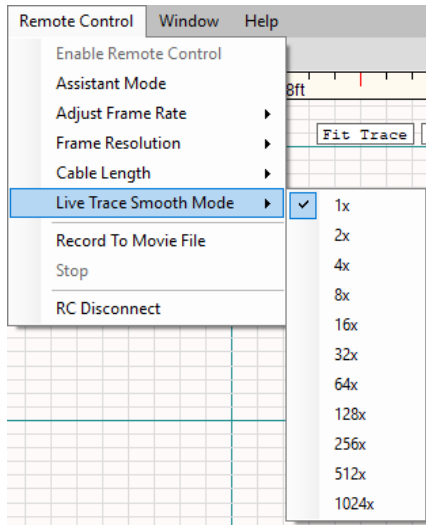


Figure 6.4 Changing the smooth mode with the Remote Control menu.

Higher frame rates will allow a faster smoothing calculation. See Section 6.2.1 for help on changing the frame rate.

6.2.3 Recording a Movie (Time Slice)

Select *Record To Movie File* from the *Remote Control* menu. This will bring up a *Save As* dialog box. Give the movie file a name. It will automatically be set to save in the default folder as chosen by *Set Default Trace Folder* in the *File* menu, though you can choose a different location to save the movie file to. (See Section 5.8.1 for more information on the default trace folder.)

Once you click *Save*, recording begins. When you are finished, select the *Stop* option under *Remote Control* (Figure 6.5).

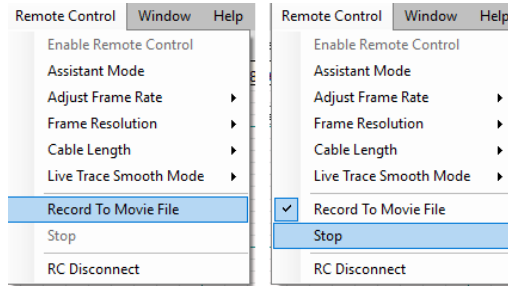


Figure 6.5 Record To Movie File and Stop options under the Remote Control menu.

While recording is active, it is indicated by the RECORDING label next to the live trace (Figure 6.6).

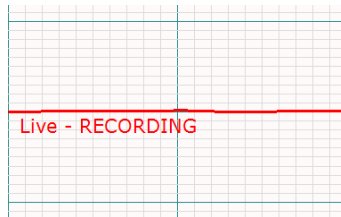


Figure 6.6 CT Viewer 2 is recording data from the CT100B.

After you have completed recording and selected *Stop*, you can load the movie trace into the workspace. Use the *File* → *Open Other Files* menu and select the filename that you created (Figure 6.7 and Figure 6.8).

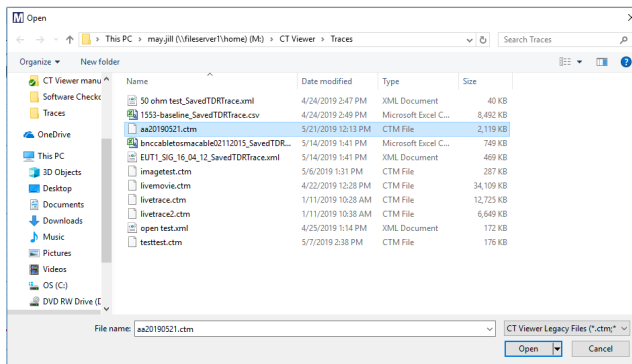


Figure 6.7 Selecting a movie trace to load into the workspace.

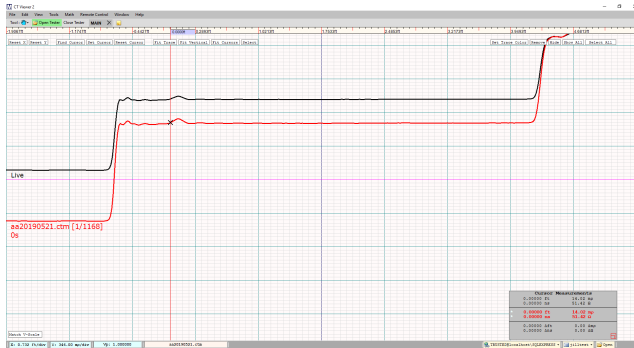


Figure 6.8 The movie trace has just been loaded.

6.2.4 Navigating a Movie (Time Slice)

Navigating a movie (time slice) is done by instructing CT Viewer 2 to render the specific frame that you are interested in.

The trace label of a movie file displays what frame of the movie you're currently on and how many frames are in the movie (e.g., 1/1168), as well as a time stamp for the frame in seconds.

You need to have the movie trace selected in order to use the actions under the *Movie* option in the *Tools* menu (Figure 6.9).

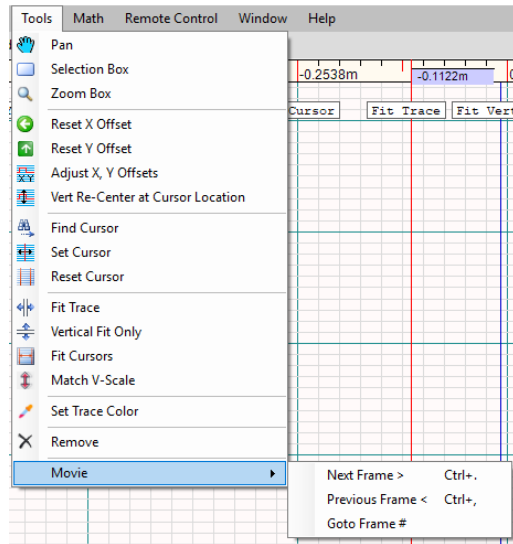


Figure 6.9 Movie sub-menu.

6.2.4.1 Next Frame

1. Select the trace with the mouse. This will turn the trace red.
2. Press the period key on the keyboard.
3. CT Viewer 2 will update the trace to reflect the next frame of the trace.

6.2.4.2 Previous Frame

1. Select the trace with the mouse. This will turn the trace red.
2. Press the comma key on the keyboard.
3. CT Viewer 2 will update the trace to reflect the previous frame of the trace.

6.2.4.3 Goto Frame

1. Select the trace with the mouse. This will turn the trace red.
2. Go to *Tools* → *Movie* → *Goto Frame #*.
3. Enter a frame number in the dialog box and click *OK*.
4. CT Viewer 2 will update the trace to reflect the chosen frame of the trace.

7 Keyboard and Mouse Help

Pressing the spacebar in CT Viewer 2 will bring up an illustration of keyboard and mouse shortcuts (Figure 7.1). Pressing the spacebar again will remove the illustration from the screen.



Figure 7.1 Pressing the spacebar brings up keyboard and mouse shortcuts.

Table 7.1 Keyboard help

Keyboard key	Action
Tab	Select the next trace in the list.
Q	Decrease m/ft per division (X-scale)
E	Increase m/ft per division (X-scale)
-, _	Decrease rho per division (Y-scale)
+, =	Increase rho per division (Y-scale)
W, Up Arrow	Move all traces up. (Pan up)
S, Down Arrow	Move all traces down. (Pan down)
A, Left Arrow	Move all traces left. (Pan left)
D, Right Arrow	Move all traces right. (Pan right)
Delete, Backspace	Delete selected traces.
Shift	Modifier for moving traces relative to each other (up-down only)
Ctrl	Modifier for moving traces relative to each other (left-right only)
Shift + Ctrl	Modifier for moving traces relative to each other (free movement)

Table 7.1 (Continued) Keyboard help

Keyboard key	Action
,	With a movie trace selected: Go back one frame.
.	With a movie trace selected: Go forward one frame.
~	Toggles between pan and select tools.
F1	Opens the online Help menu.

Table 7.2 Mouse help

Mouse	Action
Left Button	Move all traces. (Pan with mouse movement)
Right Button	Drag a zoom box over a trace. The trace will be zoomed in on the region selected by the box.
Shift	Modifier for moving traces relative to each other (up-down only)
Ctrl	Modifier for moving traces relative to each other (left-right only)
Shift + Ctrl	Modifier for moving traces relative to each other (free movement)
Alt	Modifier to change Y-offset of selected trace.
Mouse Wheel (Up)	Decrease rho per division (Y-scale)
Mouse Wheel (Down)	Increase rho per division (Y-scale)

8 Working With SQL

Working with SQL is optional and only recommended if the user has previously used CT Viewer 1 and has databases from previous use that they would still like to use in CT Viewer 2.

8.1 Configuring the Database

To configure a database for CT Viewer 2 to use, click on the *Select a Connection* button at the bottom of the display window (Figure 8.1).

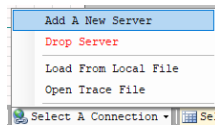


Figure 8.1 The Select a Connection button at bottom of the display window.

Choose *Add a New Server* from the menu. This brings up a dialog box (Figure 8.2).

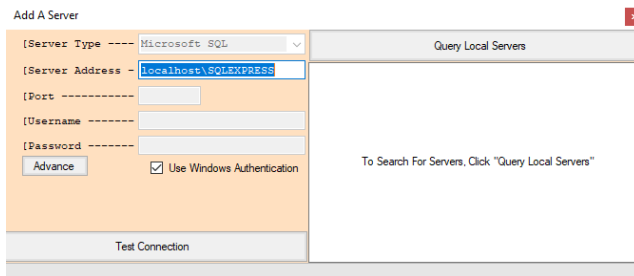


Figure 8.2 The Add a Server dialog box.

If you have an SQL Express installation on your PC, you can just click *Test Connection*. If you don't have a local installation, enter the server name or IP information for your network SQL server and then click *Test Connection*. If *Test Connection* succeeds, a dialog will ask if you want to add the server to your list. Choose OK and close the *Add a Server* dialog. Now click again on the *Select a Connection* menu and choose the connection that you just created (Figure 8.3).

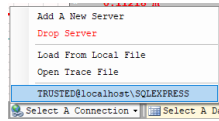


Figure 8.3 Choose your SQL connection.

Now that you have chosen an SQL server connection, the *Select a Database* button will populate with the list of databases available from that server. Choose the database that you wish to use or select the *Create Empty Database* option (Figure 8.4).

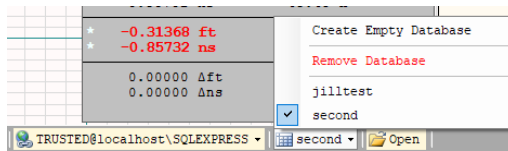


Figure 8.4 Choose a database from the SQL server.

Now that you have a database selected, there are two database commands in the *File* menu available to you, *Open Current Database* and *Save Trace to Database* (Figure 8.5).

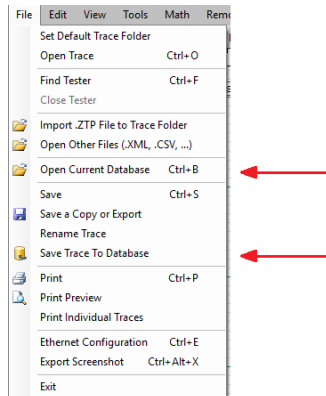


Figure 8.5 File menu with database options.

8.2 Loading Traces From a Database to the Workspace

Click on *File* then *Open Current Database* (Hotkey: Ctrl-B).

Clicking on this item will open a database window displaying a list of traces contained in the current database.

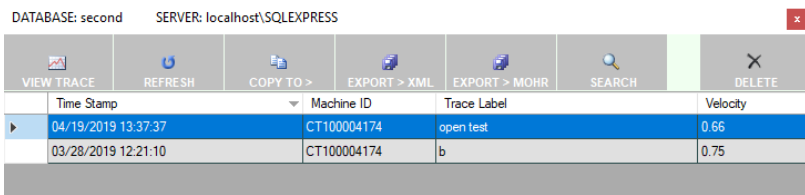


Figure 8.6 An example of a database overview.

Figure 8.6 shows the result of the *Open Current Database* command. Select a trace by clicking on rows in the table. Use Shift-click or Ctrl-click to select additional traces. The buttons across the top of the window are used to perform different actions on the selected trace(s). These are described in Table 8.1.

Table 8.1 Database functions

Menu Selection	Purpose/Action
View Trace	Load the selected traces onto the workspace.
Refresh	Reload the database to see if any new traces have been added since the last refresh.
Copy To	Copy the selected traces to another database.
Export > XML	Export the selected traces to an XML file.
Export > MOHR	Export the selected traces to a .mohr formatted file.
Search	For very large databases, the search capability can be used to search for traces by name, source machine ID, date, or velocity of propagation.
Delete	Remove the selected traces from the database. This will remove them permanently.

Exit the database overview by pressing the X button on the top right corner of the window.

8.3 Saving Traces in a Database

Traces that are displayed in CT Viewer 2 can be saved as .mohr files or can be saved in a database. Use *File* → *Save Trace to Database*, and the currently selected trace is added to your database. Click the *Refresh* button to see that the trace has been added to the collection. See Figure 8.7.

DATABASE: second SERVER: localhost\SQLEXPRESS

VIEW TRACE	REFRESH	COPY TO >	EXPORT > XML	EXPORT > MOHR	SEARCH		DELETE
	Time Stamp	Machine ID	Trace Label	Velocity			
	04/19/2019 13:37:37	CT100004174	open test	0.66			
	03/28/2019 12:21:10	CT100004174	b	0.75			
	05/24/2018 19:49:42	CT100000486	1553 DA no Coupler	1			
	12/29/2017 13:52:49	CT100002053	1553-baseline	1			
	12/29/2017 13:49:33	CT100002053	1553-cable2-open	1			
	02/11/2015 16:58:29	LF453	bnccabletosmacable	1			

Figure 8.7 After adding several traces to the database.

Index

- annotations, 48
 - creating, 48
 - deleting, 49
 - modifying, 49
- assistant mode, 60
- average, 51

- compatibility with CT100, 1
- complex division, 54
- connecting to CT100B
 - via Ethernet, 10
 - via USB, 9
- cursor
 - finding, 23
 - measurements, 19, 30
 - resetting location of, 23
 - setting, 23

- default trace folder, 15, 37
- difference, 52
- display
 - extra grid lines, 46
 - on-screen buttons, 20
 - standard deviation, 46
 - temperature, 46
 - traces, 43
 - VSWR, 46

- envelope plots, 38
- Ethernet
 - configuring settings, 37
 - connecting to CT100B with, 10

- FFT (Fast Fourier Transform), 53
- first derivative (slope), 55

- horizontal scale, 35

- installation, 3
 - license file, 14
 - SQL Server, 4
 - USB drivers, 4

- keyboard shortcuts, 67

- license file, 14

- measurement
 - changing units, 43
- menus
 - Math, 49
 - Remote Control, 59
 - Tools, 20
 - View, 43
 - Window, 28
- mouse shortcuts, 68
- movie (time slice)
 - navigating, 64
 - recording, 62

- nanoseconds, 44

- on-screen buttons, 20

- phase, 53

- remote control, 59
 - adjusting frame rate, 60
 - assistant mode, 60
 - disconnecting, 60
 - navigating a movie (time slice), 64
 - recording a movie (time slice), 62
 - smooth mode, 61
- rendering mode, 45

- S-parameter, 54
- scale
 - horizontal, 35
 - vertical, 35

- screenshot
 - exporting, 36
 - printing, 36
- shortcuts
 - keyboard, 67
 - mouse, 68
- smoothing, 56
- SQL Server, 3, 69
 - configuring database, 69
 - copying traces to, 16
 - installation, 4
 - loading traces to the workspace,
70
 - renaming traces, 42
 - saving traces to, 41, 71
- standard deviation, 46

- temperature, 46
- trace
 - average, 51
 - color, 26
 - complex division, 54
 - copying, 15, 16
 - difference, 52
 - display, 43
 - FFT (Fast Fourier Transform),
53
 - first derivative, 55
 - hiding, 27
 - importing .ZTP files, 40
 - label options, 47
 - list, 29
 - loading from files, 37
 - moving, 33
 - opening, 37
 - phase, 53
 - removing, 27
 - renaming, 41
 - S-parameter, 54
 - saving, 41
 - selecting, 25, 29
 - smoothing, 56

- updates
 - CT Viewer, 6
 - CT100B, 14
- USB drivers, 4

- vertical scale, 35
- VSWR (voltage standing wave ratio),
46

- windows
 - hiding, 31
 - History List, 29
 - Information Box/Cursor
Measurements, 30
 - resetting location of, 28
 - Tools, 20
 - Trace List, 29
 - Trace Minimap, 30
- workspace tabs, 20

- ZTP files, 40